


Data Architectures and Their Potential Impacts on Analytics and Models


Todd Lehmann and Meghan Goldfarb



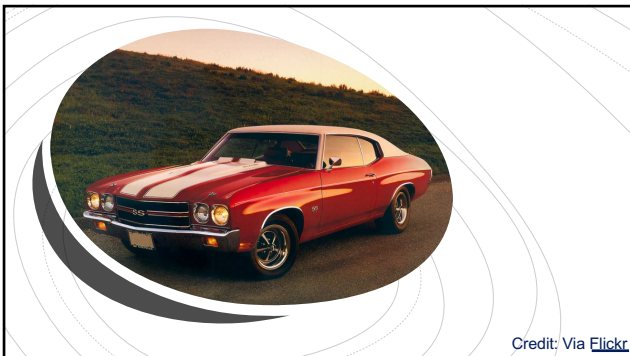
1

Antitrust Notice

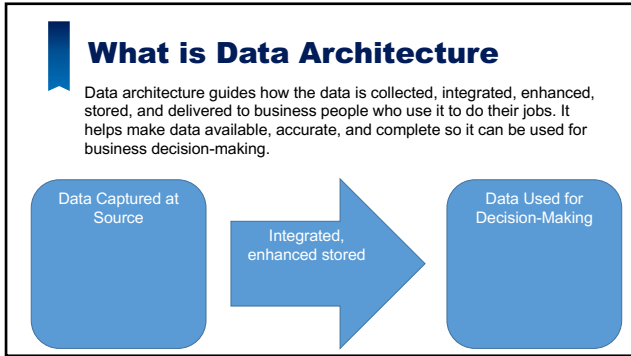
- The Casualty Actuarial Society is committed to adhering strictly to the letter and spirit of the antitrust laws. Seminars conducted under the auspices of the CAS are designed solely to provide a forum for the expression of various points of view on topics described in the programs or agendas for such meetings.
- Under no circumstances shall CAS seminars be used as a means for competing companies or firms to reach any understanding – expressed or implied – that restricts competition or in any way impairs the ability of members to exercise independent business judgment regarding matters affecting competition.
- It is the responsibility of all seminar participants to be aware of antitrust regulations, to prevent any written or verbal discussions that appear to violate these laws, and to adhere in every respect to the CAS antitrust compliance policy.



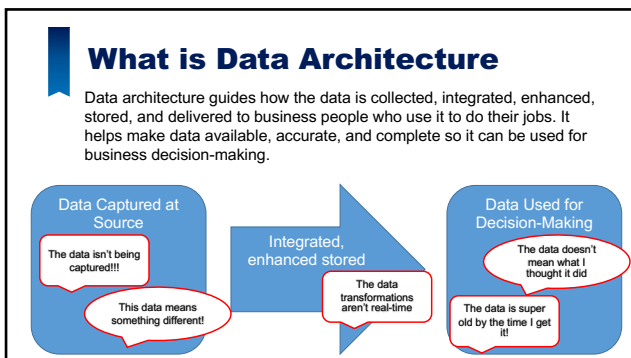
2



5



6



7

The Classic

Key Features

- Focused on operational processing
- The rise of relational databases

Key technology limitations

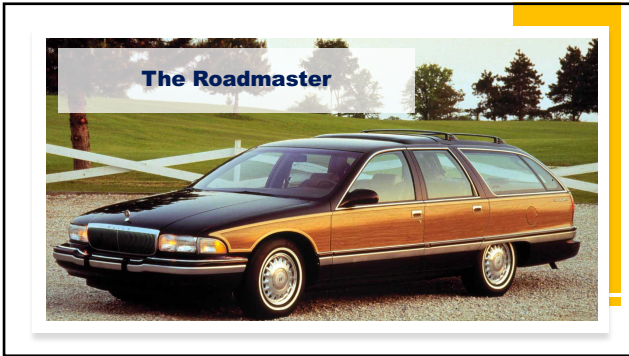
- Data storage was expensive
- Data kept in it's organizational silos
- Optimize processing time

Key challenges:

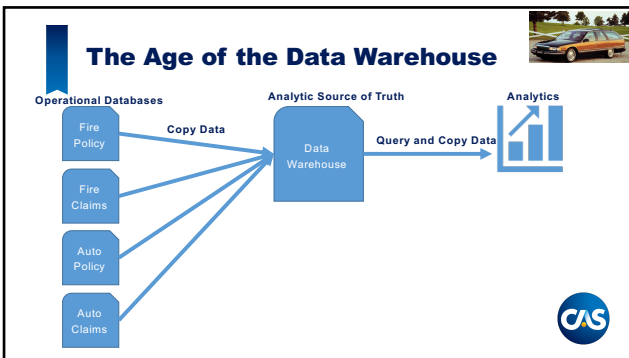
- Data history not easily available
- Data not very granular or understandable
- same data captured in multiple places, leading to data quality issues

Credit: Via Flickr

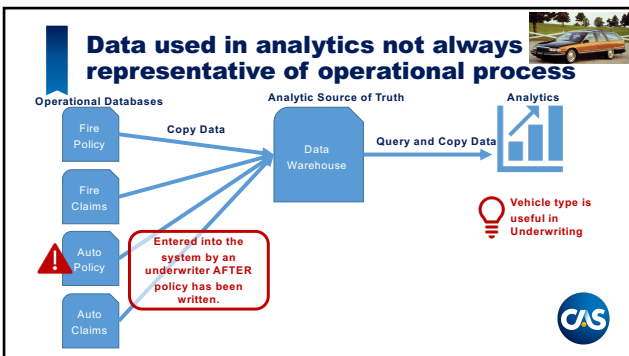
11



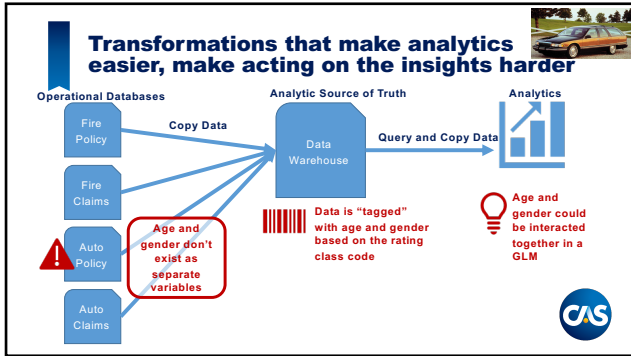
12



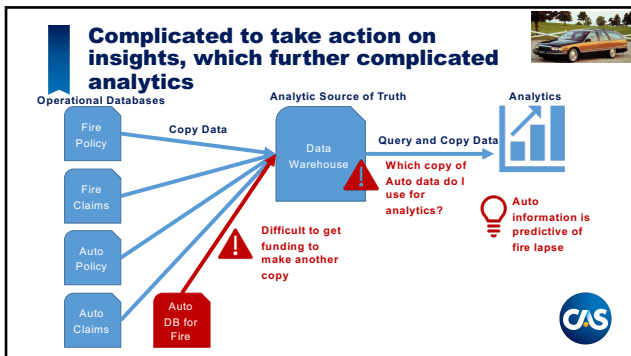
13



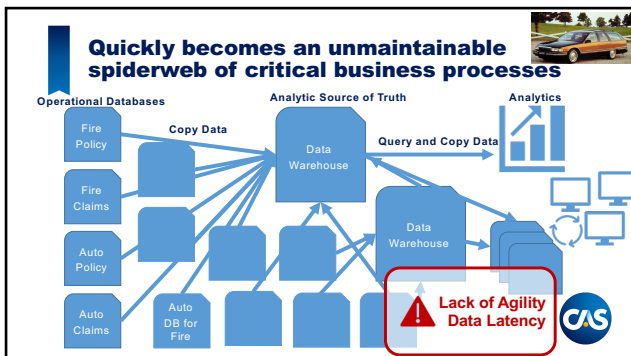
14



15



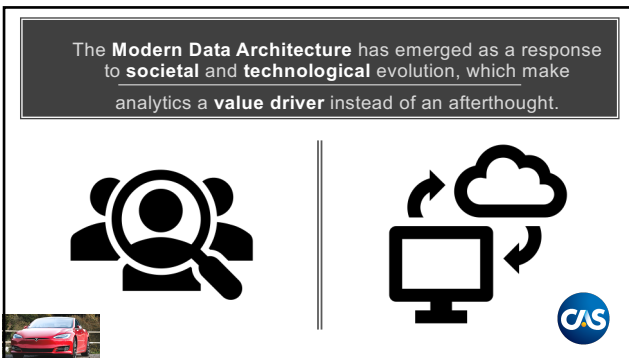
16



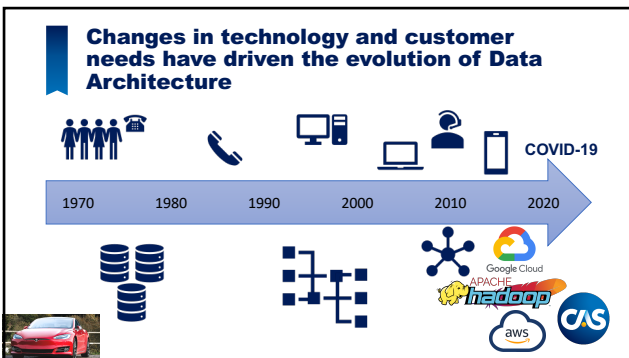
17



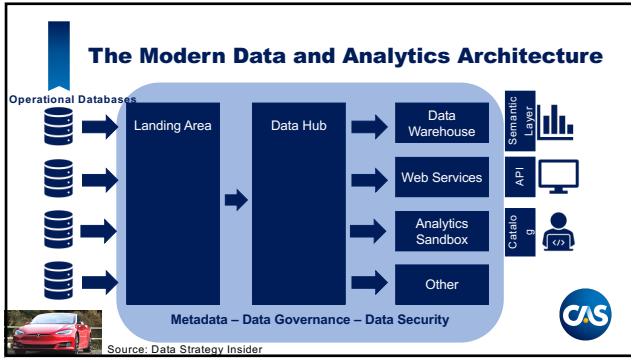
18



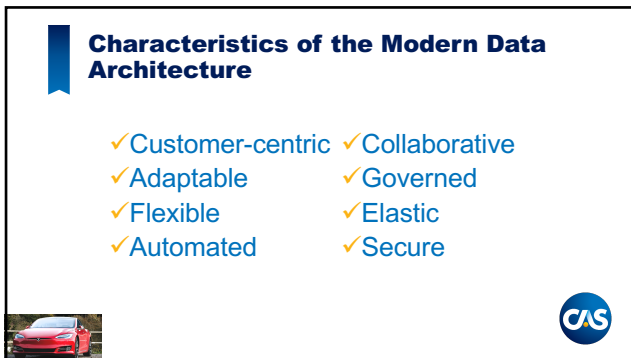
19



20



21



22



23

Live Poll: What is your data architecture?

- How old is the data when you get access to it for analytics?
 - Data is refreshed monthly
 - Some data is available daily, but most is monthly
 - Data is available in real time
- How long does it take to implement a new customer-facing model that needs new data?
 - Years
 - 6-12 Months
 - 1-5 Months
 - <1 Month
- How long does it take to implement a new customer-facing model with existing data?
 - Years
 - 6-12 Months
 - 1-5 Months
 - < 1 Month
- Do you have to translate your data through codes, or is it in clear definitions (e.g. Gender = Male vs. Code = M)?
 - Most of the time
 - Sometimes
 - Never



24

Tactics based on type of Data Architecture



- Have patience through the complexity
- Advocate for change
- Ask questions to understand
- Understand data differences
- Constrain models to known operational data
- Change the capture paradigm
- Blend operational and analytics
- Learn new languages and tools

25

Chief Data Officer Role

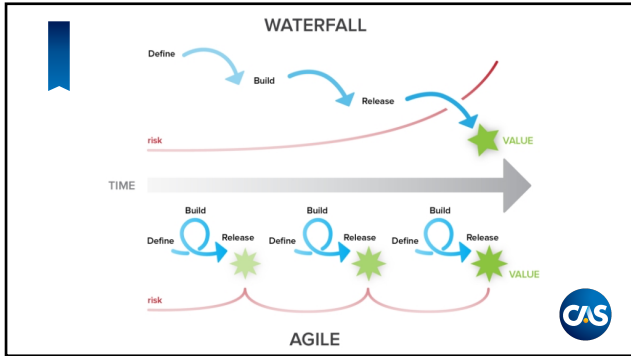


- Capital One appointed the first CDO in 2002
- In 2020, 57% of fortune 1000 organizations had a CDO
- Responsibilities Include
 - Governance
 - Operations
 - Innovation
 - Analytics

Get to know the purpose of the Data organization within your company, provide feedback, and share your experiences to help build platform for change.



28



29

IT Business Model

Project Management

- Fixed scope projects
- Yearly funding cycle
- Move people to the work
- Less business engagement

Ask for more direct business engagement!

Product Management

- Clear business outcomes
- Persistent, cross functional teams with end-to-end ownership
- Direct business engagement

Connect with teams for data products, and get involved!

CAS

30

Casualty Actuarial Society
 4350 North Fairfax Drive, Suite 250
 Arlington, Virginia 22203
 www.casact.org

31
