




---

---

---

---

---

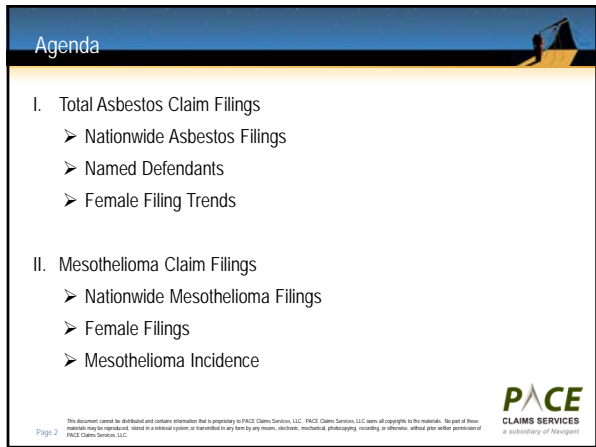
---

---

---

---

---




---

---

---

---

---

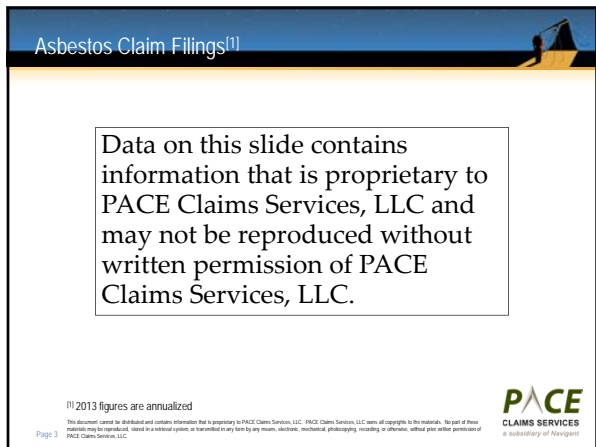
---

---

---

---

---




---

---

---

---

---

---

---

---

---

---

## Asbestos Claim Filings by Disease<sup>[1]</sup>

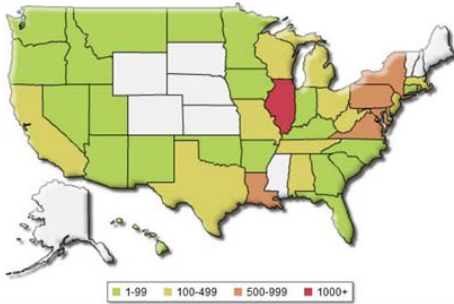
Data on this slide contains information that is proprietary to PACE Claims Services, LLC and may not be reproduced without written permission of PACE Claims Services, LLC.

<sup>[1]</sup> 2013 figures are annualized

This document cannot be distributed and contains information that is proprietary to PACE Claims Services, LLC. PACE Claims Services, LLC owns all copyrights to the materials. No part of these materials may be reproduced, stored in a retrieval system, or transmitted in any form by any means, electronic, mechanical, photocopying, recording, or otherwise, without prior written permission of PACE Claims Services, LLC.



## Nationwide Asbestos Filings in 2011

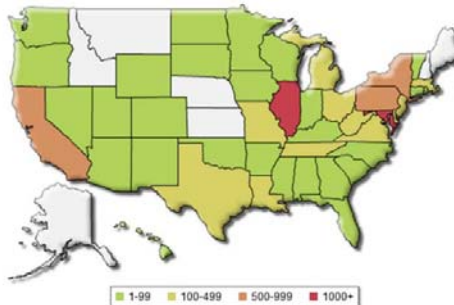


Page 4

This document cannot be distributed and contains information that is proprietary to PACE Claims Services, LLC. PACE Claims Services, LLC owns all copyrights to the materials. No part of these materials may be reproduced, stored in a retrieval system, or transmitted in any form by any means, electronic, mechanical, photocopying, recording, or otherwise, without prior written permission of PACE Claims Services, LLC.



## Nationwide Asbestos Filings in 2012

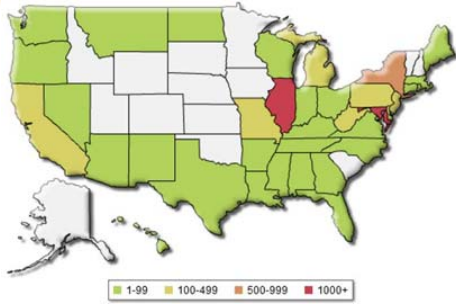


Page 5

This document cannot be distributed and contains information that is proprietary to PACE Claims Services, LLC. PACE Claims Services, LLC owns all copyrights to the materials. No part of these materials may be reproduced, stored in a retrieval system, or transmitted in any form by any means, electronic, mechanical, photocopying, recording, or otherwise, without prior written permission of PACE Claims Services, LLC.



### Nationwide Asbestos Filings in 2013<sup>[1]</sup>



<sup>[1]</sup> 2013 figures are annualized

This document cannot be distributed and contains information that is proprietary to PACE Claims Services, LLC. PACE Claims Services, LLC owns all copyrights to the materials. No part of these materials may be reproduced, stored in a retrieval system, or transmitted in any form by any means, electronic, mechanical, photocopying, recording, or otherwise, without prior written permission of PACE Claims Services, LLC.




---

---

---

---

---

---

---

---

---

---

---

---

### Total Number of Named Defendants<sup>[1]</sup>

Data on this slide contains information that is proprietary to PACE Claims Services, LLC and may not be reproduced without written permission of PACE Claims Services, LLC.

<sup>[1]</sup> 2013 data is through April 30, 2013

Page 7

This document cannot be distributed and contains information that is proprietary to PACE Claims Services, LLC. PACE Claims Services, LLC owns all copyrights to the materials. No part of these materials may be reproduced, stored in a retrieval system, or transmitted in any form by any means, electronic, mechanical, photocopying, recording, or otherwise, without prior written permission of PACE Claims Services, LLC.




---

---

---

---

---

---

---

---

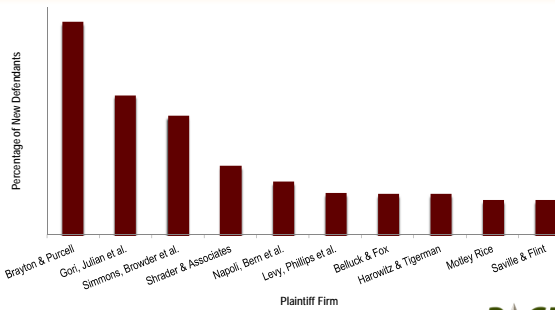
---

---

---

---

### Firms Bringing the Most New Defendants in 2013



Page 9

This document cannot be distributed and contains information that is proprietary to PACE Claims Services, LLC. PACE Claims Services, LLC owns all copyrights to the materials. No part of these materials may be reproduced, stored in a retrieval system, or transmitted in any form by any means, electronic, mechanical, photocopying, recording, or otherwise, without prior written permission of PACE Claims Services, LLC.




---

---

---

---

---

---

---

---

---

---

---

---

## Female Filings – All Diseases<sup>[1]</sup>

Data on this slide contains information that is proprietary to PACE Claims Services, LLC and may not be reproduced without written permission of PACE Claims Services, LLC.

<sup>[1]</sup> 2013 figures are annualized  
This document cannot be distributed and contains information that is proprietary to PACE Claims Services, LLC. PACE Claims Services, LLC owns all copyrights to the materials. No part of these materials may be reproduced, stored in a retrieval system, or transmitted in any form by any means, electronic, mechanical, photocopying, recording, or otherwise, without prior written permission of PACE Claims Services, LLC.



---

---

---

---

---

---

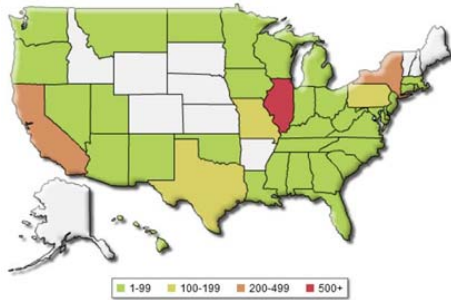
---

---

---

---

## Nationwide Mesothelioma Filings in 2011



This document cannot be distributed and contains information that is proprietary to PACE Claims Services, LLC. PACE Claims Services, LLC owns all copyrights to the materials. No part of these materials may be reproduced, stored in a retrieval system, or transmitted in any form by any means, electronic, mechanical, photocopying, recording, or otherwise, without prior written permission of PACE Claims Services, LLC.



---

---

---

---

---

---

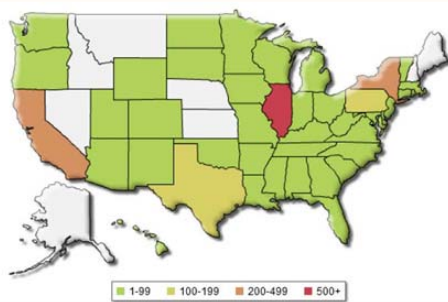
---

---

---

---

## Nationwide Mesothelioma Filings in 2012



This document cannot be distributed and contains information that is proprietary to PACE Claims Services, LLC. PACE Claims Services, LLC owns all copyrights to the materials. No part of these materials may be reproduced, stored in a retrieval system, or transmitted in any form by any means, electronic, mechanical, photocopying, recording, or otherwise, without prior written permission of PACE Claims Services, LLC.



---

---

---

---

---

---

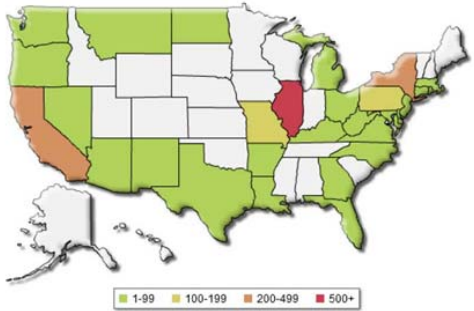
---

---

---

---

### Nationwide Mesothelioma Filings in 2013<sup>[1]</sup>



1-99 100-199 200-499 500+

<sup>[1]</sup> 2013 figures are annualized  
 This document cannot be distributed and contains information that is proprietary to PACE Claims Services, LLC. PACE Claims Services, LLC owns all copyright to the materials. No part of these materials may be reproduced, stored in a retrieval system, or transmitted in any form by any means, electronic, mechanical, photocopying, recording, or otherwise, without prior written permission of PACE Claims Services, LLC.




---

---

---

---

---

---

---

---

---

---

---

---

### Female Filings – Mesothelioma<sup>[1]</sup>

Data on this slide contains information that is proprietary to PACE Claims Services, LLC and may not be reproduced without written permission of PACE Claims Services, LLC.

<sup>[1]</sup> 2013 figures are annualized  
 This document cannot be distributed and contains information that is proprietary to PACE Claims Services, LLC. PACE Claims Services, LLC owns all copyright to the materials. No part of these materials may be reproduced, stored in a retrieval system, or transmitted in any form by any means, electronic, mechanical, photocopying, recording, or otherwise, without prior written permission of PACE Claims Services, LLC.




---

---

---

---

---

---

---

---

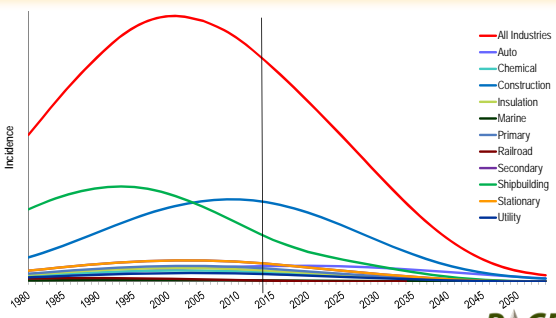
---

---

---

---

### NCI Nicholson Mesothelioma Incidence



This document cannot be distributed and contains information that is proprietary to PACE Claims Services, LLC. PACE Claims Services, LLC owns all copyright to the materials. No part of these materials may be reproduced, stored in a retrieval system, or transmitted in any form by any means, electronic, mechanical, photocopying, recording, or otherwise, without prior written permission of PACE Claims Services, LLC.

---

---

---

---

---

---

---

---

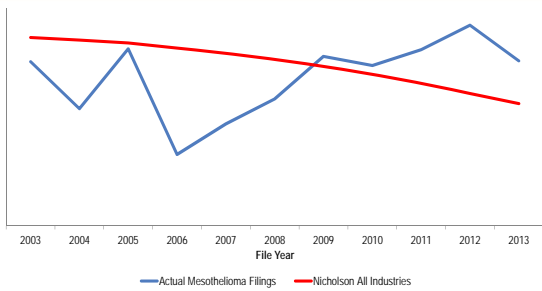
---

---

---

---

### Mesothelioma Incidence to Actual Filings<sup>[1]</sup>



<sup>[1]</sup> 2013 figures are annualized

This document cannot be distributed and contains information that is proprietary to PACE Claims Services, LLC. PACE Claims Services, LLC owns all copyright in the materials. No part of these materials may be reproduced, stored in a retrieval system, or transmitted in any form by any means, electronic, mechanical, photocopying, recording, or otherwise, without prior written permission of PACE Claims Services, LLC.



Page 16

---

---

---

---

---

---

---

---

---

---

### Kip Makuc

Kip Makuc is a Director in both the Liability Estimation and Insurance Coverage Analysis group in the Disputes & Investigations practice of Navigant Consulting and PACE Claims Services, Navigant's claims management subsidiary. He is based in Washington, DC.

Mr. Makuc has significant experience providing accounting, financial, and litigation support services to clients involved in mass tort litigation, particularly asbestos bodily injury claims. Mr. Makuc has consulted to policyholders, insurers, financial institutions, third-party administrators, bankruptcy trusts, and their counsel on a variety of mass tort and insurance matters, including coverage litigation, claim data gathering and analysis, claim reviews and categorization, insurance and reinsurance recovery, legal cost reviews, future liability estimation, bankruptcy analysis, merger and acquisition due diligence, and claim cost allocation and insurer billing. He currently heads the insurer billing team for PACE Claims Services. Mr. Makuc has prepared expert reports and offered expert witness testimony for policyholders and insurers involved in insurance coverage disputes and other types of matters.

Mr. Makuc received his B.A. in International Relations with honors from Boston University in May 1992.



This document cannot be distributed and contains information that is proprietary to PACE Claims Services, LLC. PACE Claims Services, LLC owns all copyright in the materials. No part of these materials may be reproduced, stored in a retrieval system, or transmitted in any form by any means, electronic, mechanical, photocopying, recording, or otherwise, without prior written permission of PACE Claims Services, LLC.

Page 17

---

---

---

---

---

---

---

---

---

---