

# Crop Modeling Pitfalls – A Stop Loss Perspective on Exposure Modeling

James Long – Head of Agricultural Analytics  
June 2013

# Antitrust Notice

- The Casualty Actuarial Society is committed to adhering strictly to the letter and spirit of the antitrust laws. Seminars conducted under the auspices of the CAS are designed solely to provide a forum for the expression of various points of view on topics described in the programs or agendas for such meetings.
- Under no circumstances shall CAS seminars be used as a means for competing companies or firms to reach any understanding – expressed or implied – that restricts competition or in any way impairs the ability of members to exercise independent business judgment regarding matters affecting competition.
- It is the responsibility of all seminar participants to be aware of antitrust regulations, to prevent any written or verbal discussions that appear to violate these laws, and to adhere in every respect to the CAS antitrust compliance policy.

## Just a Reminder...

---

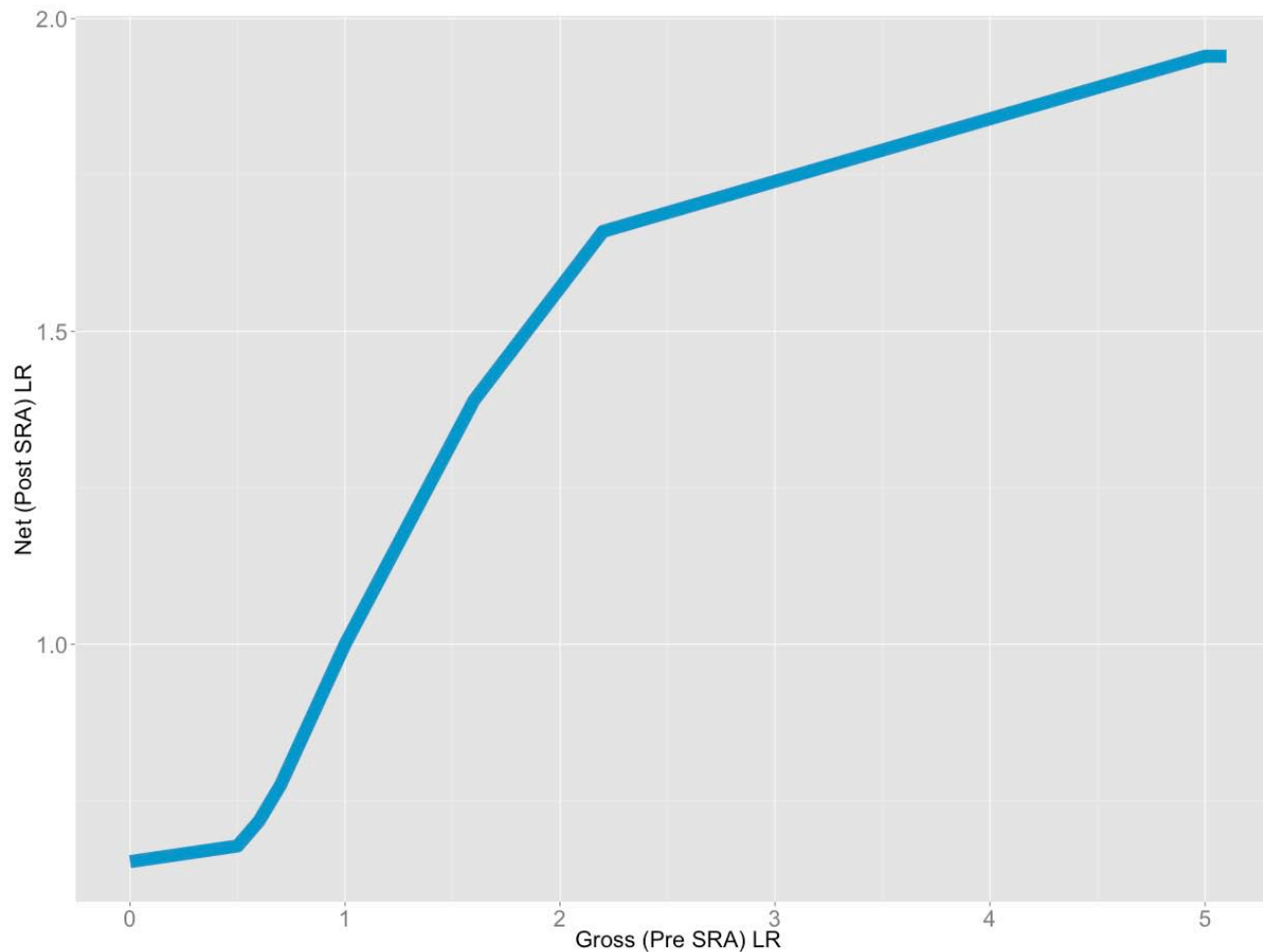
- **This is the author's view:** The author of this presentation is solely responsible for its contents. The views and opinions expressed in this presentation are solely those of the author and not of RenaissanceRe Holdings, Ltd. or any of its subsidiary companies.
- **Thought provoking only:** The materials are provided for information purposes only, are in summary form and thus do not include all information necessary for analysis.
- **This is not consulting:** No representations or warranties are given as to the accuracy or completeness of the materials and no professional advice or guidance is given by the presentation. If you want to use these ideas, professional consultation should be sought.
- **This is not financial advice:** No financial advice is being given nor any recommendation to invest in any financial product. Historical data is presented and historical results/events give no assurance as to future results.

# US MPCl: The SRA Distorts Modeling Heuristics...

---

# US MPCRI: The SRA Distorts Modeling Heuristics...

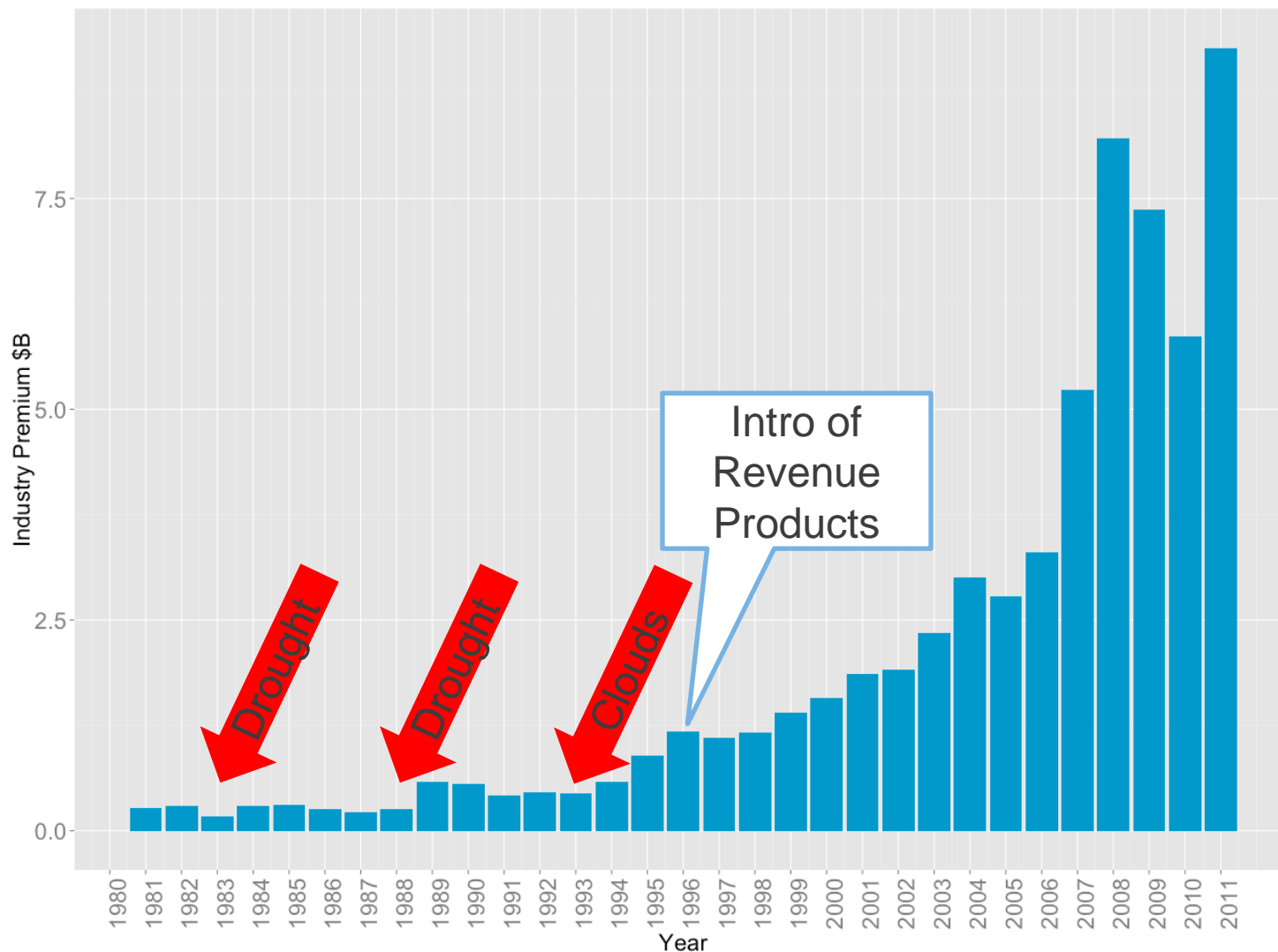
Impact of the SRA on Loss Ratios in Group 1 States



## There's Not as Much Data as it Seems...

---

# There's Not as Much Data as it Seems...



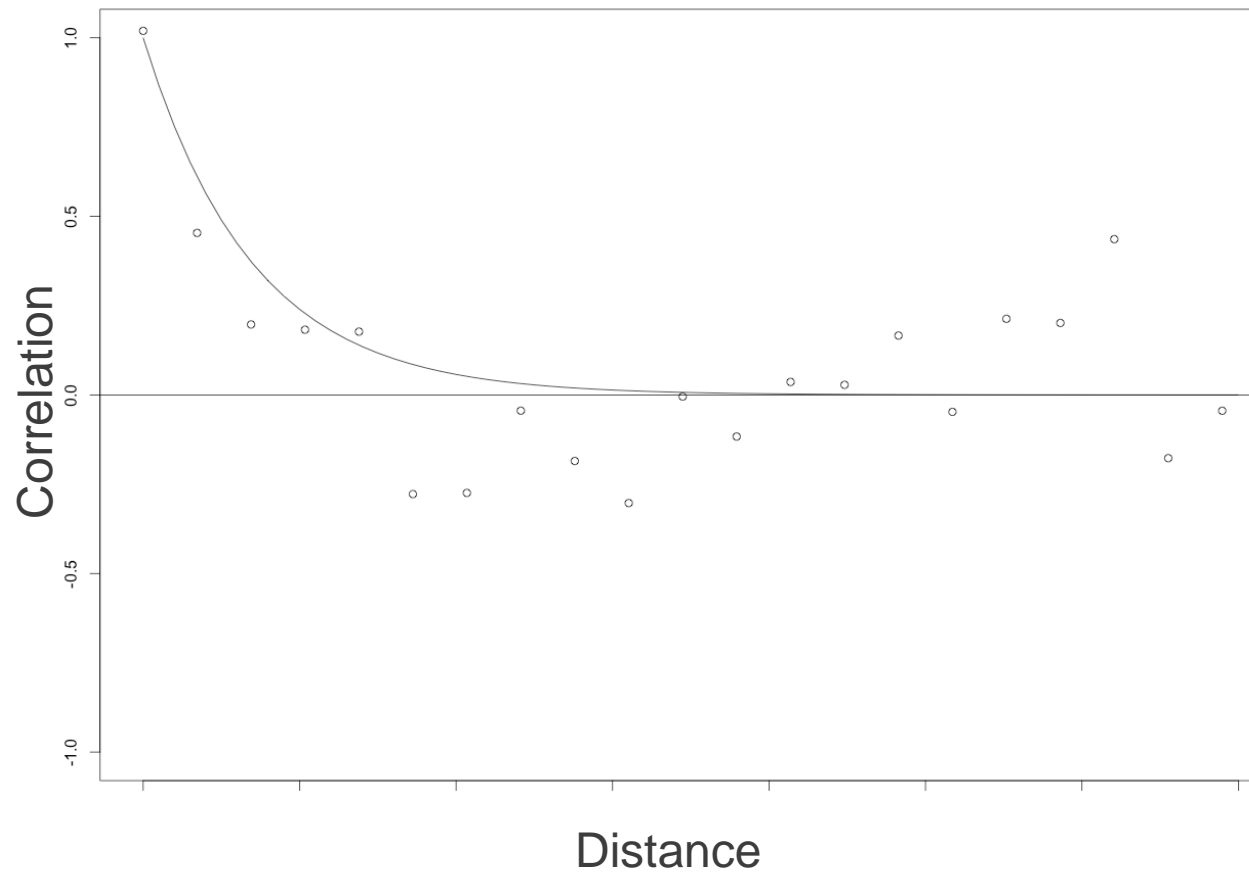
# Spatial Correlation Really Matters...

---



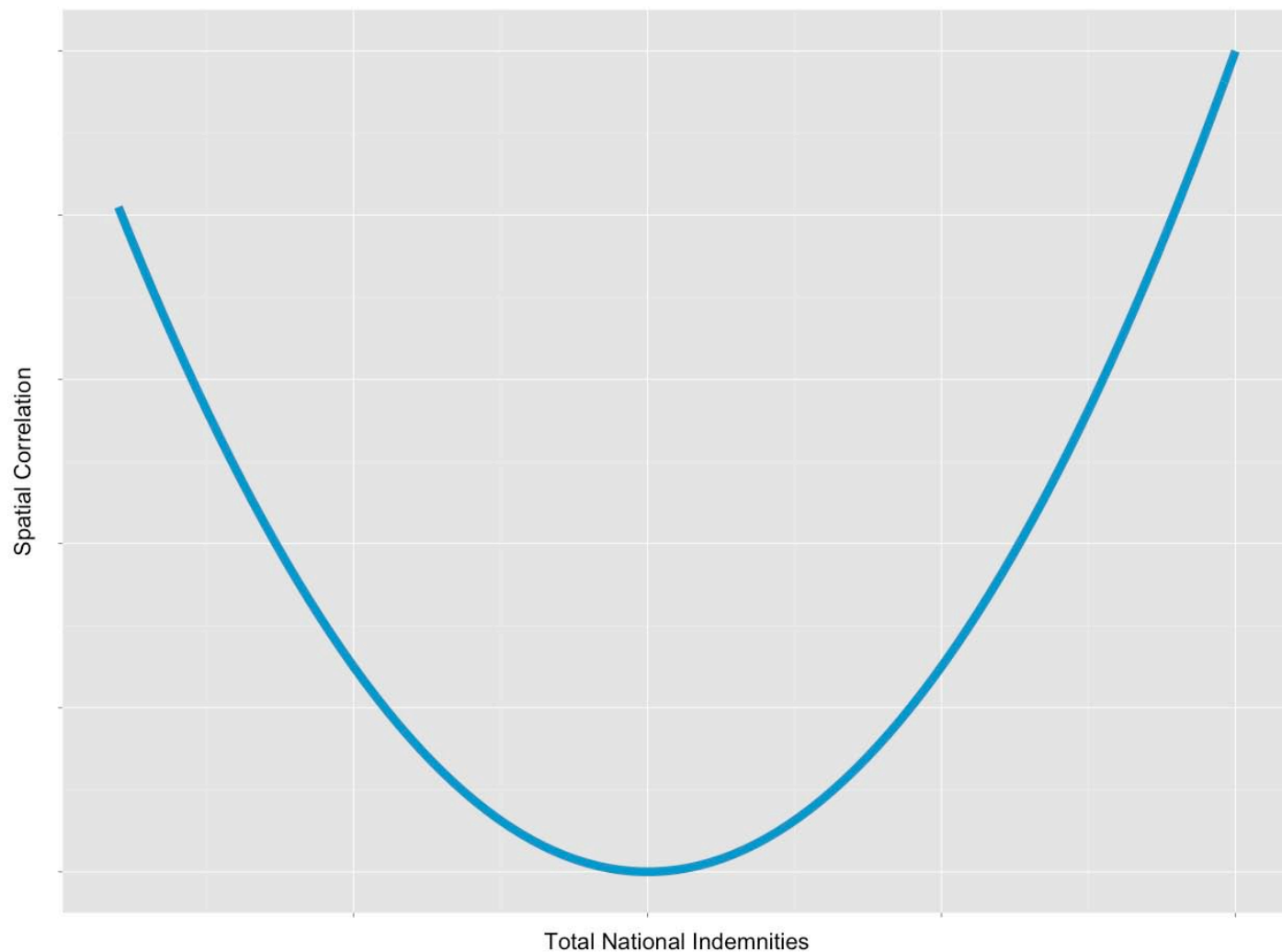
# Spatial Correlation Really Matters...

---

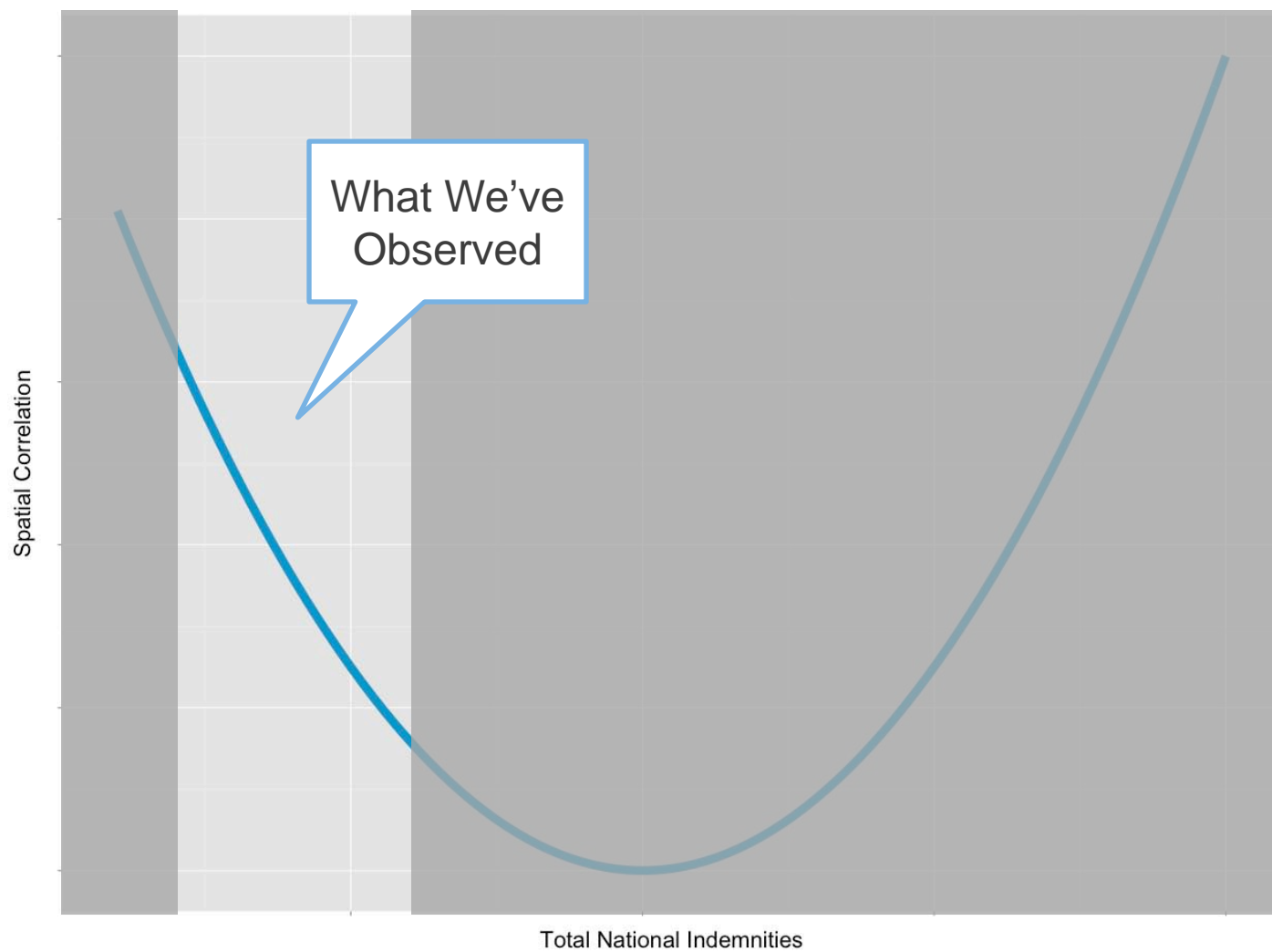


# Surprise! Spatial Correlation Is a Function of Losses!

---



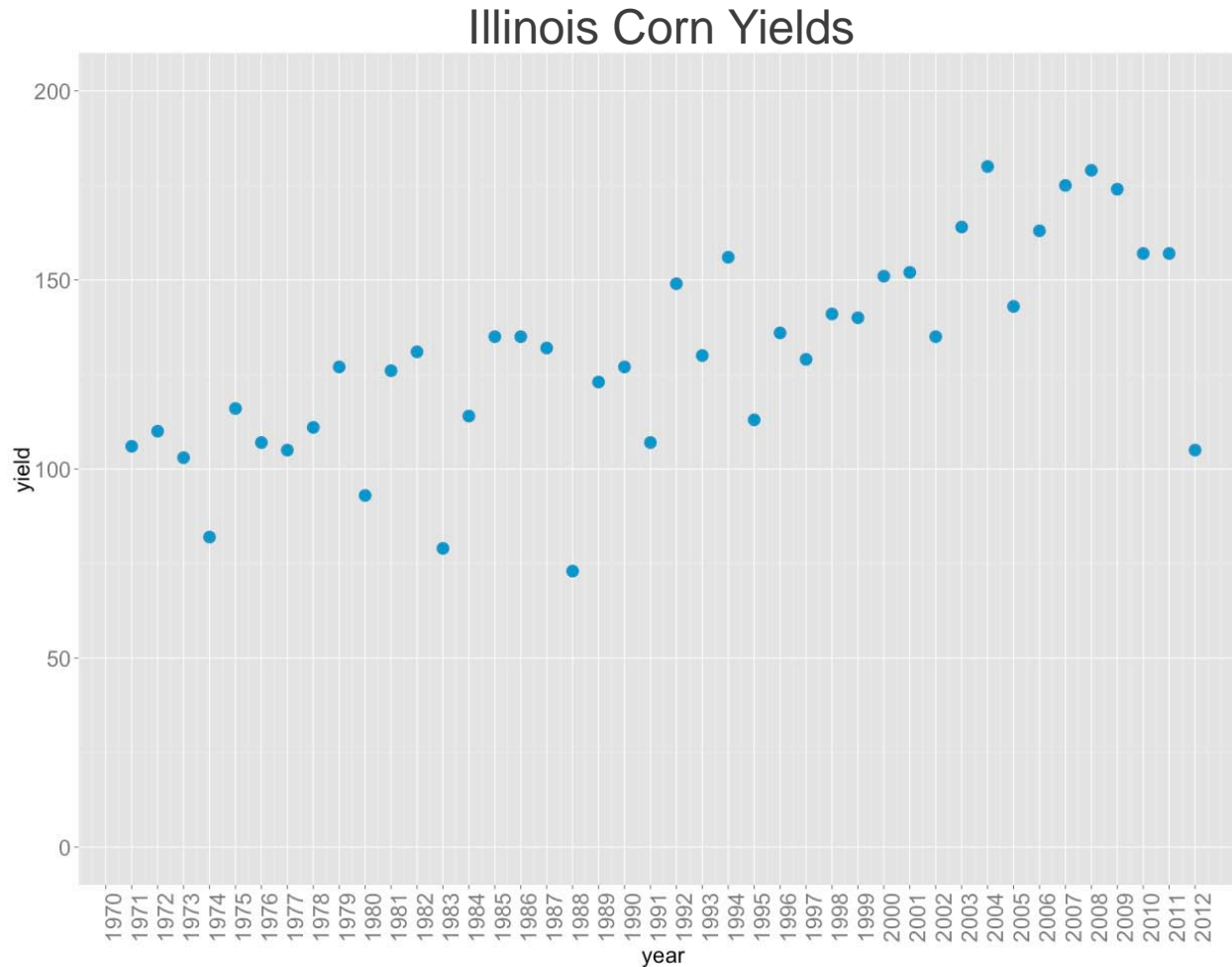
## Small Sample (Again)...



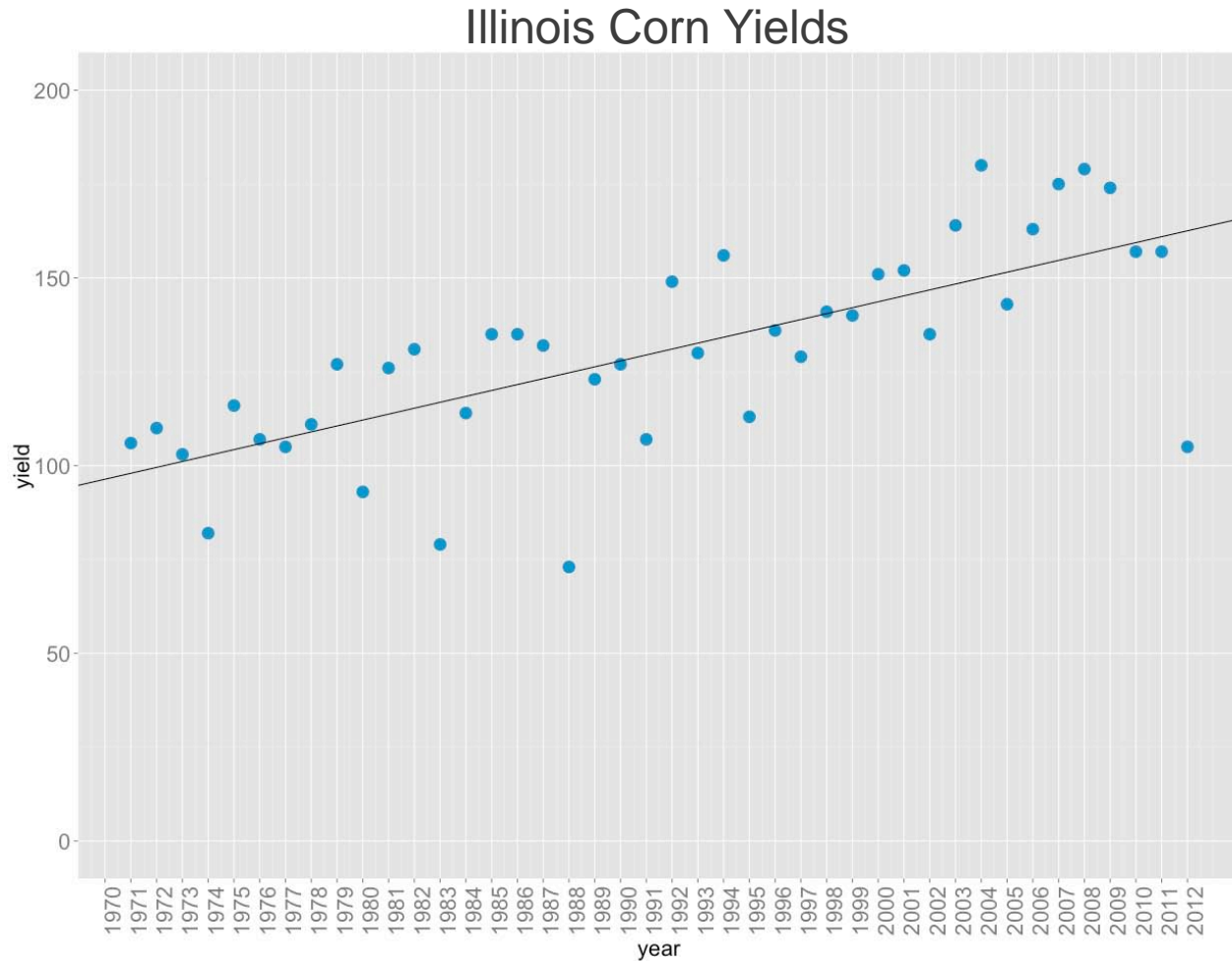
# Removing Trend From Historical Crop Yields is Important

---

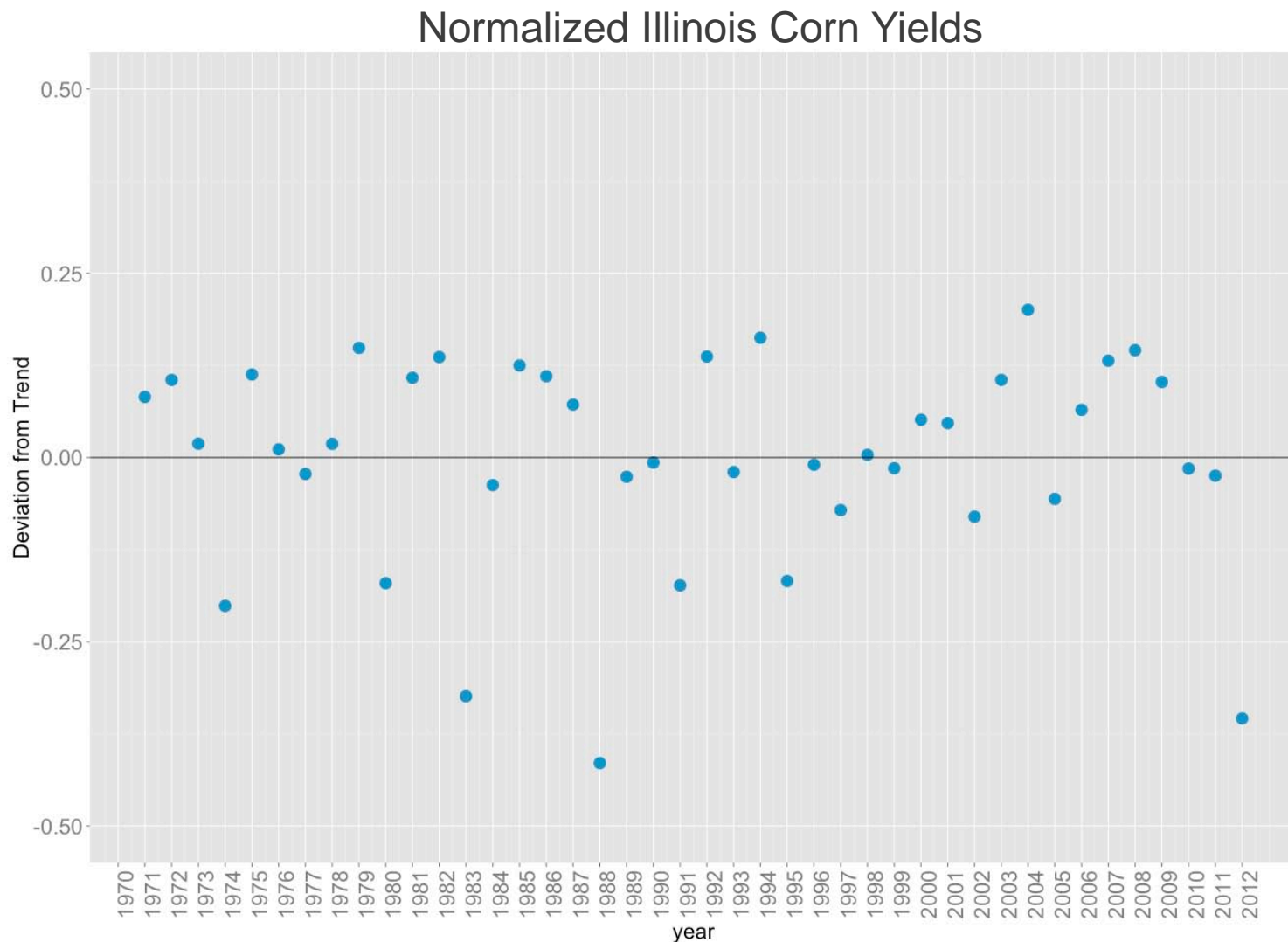
# Removing Trend From Historical Crop Yields is Tricky



# Removing Trend From Historical Crop Yields is Tricky

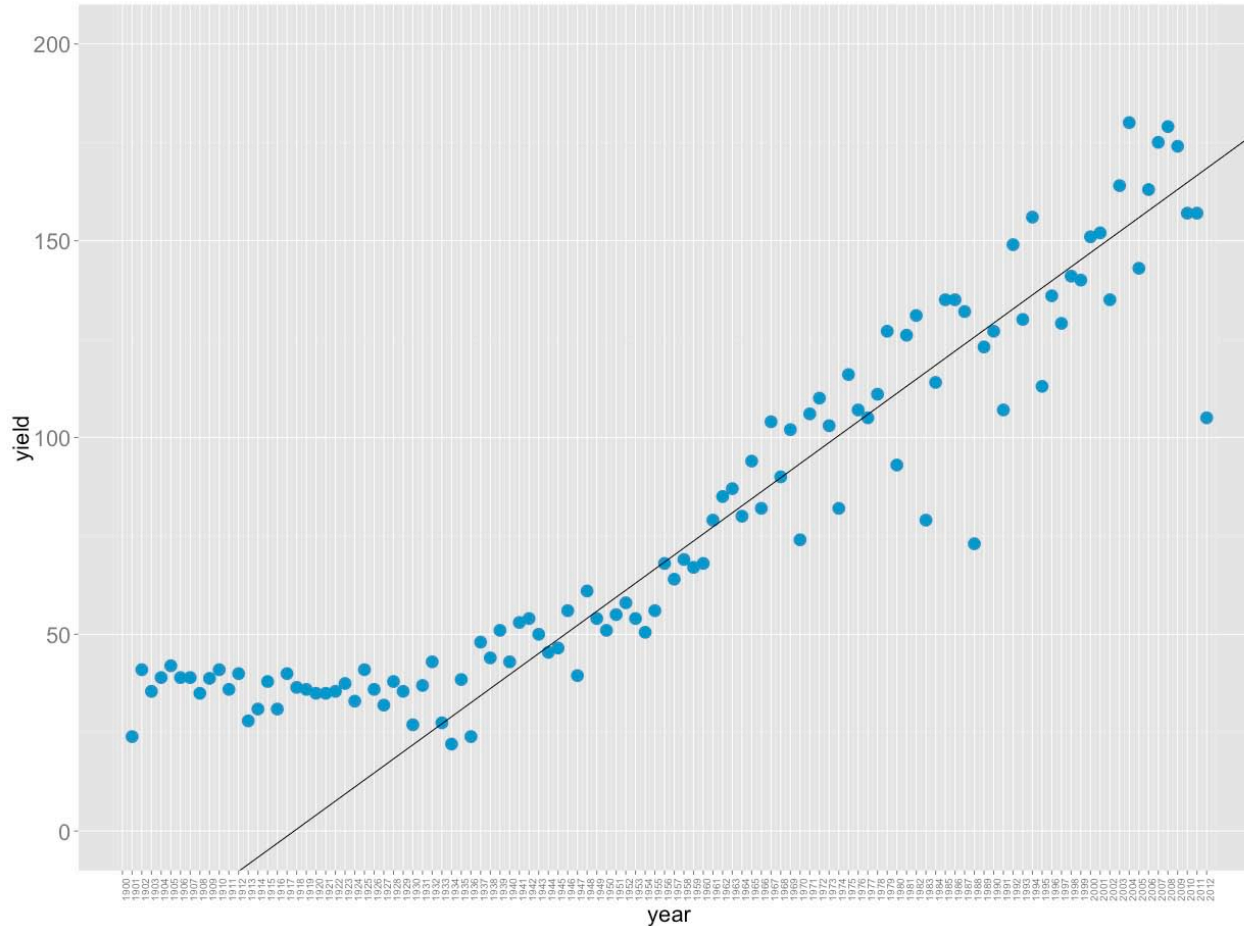


# Removing Trend From Historical Crop Yields is Tricky



# Removing Trend From Historical Crop Yields is Tricky

Pay attention to the details.





Renaissance House  
12 Crow Lane  
Pembroke HM19  
Bermuda

[www.renre.com](http://www.renre.com)