



Orphans in Actuarial Data

DM-1: Data Cleansing for Predictive Modeling

Jeremy Benson

March 2012 – RPM Seminar



Antitrust Notice

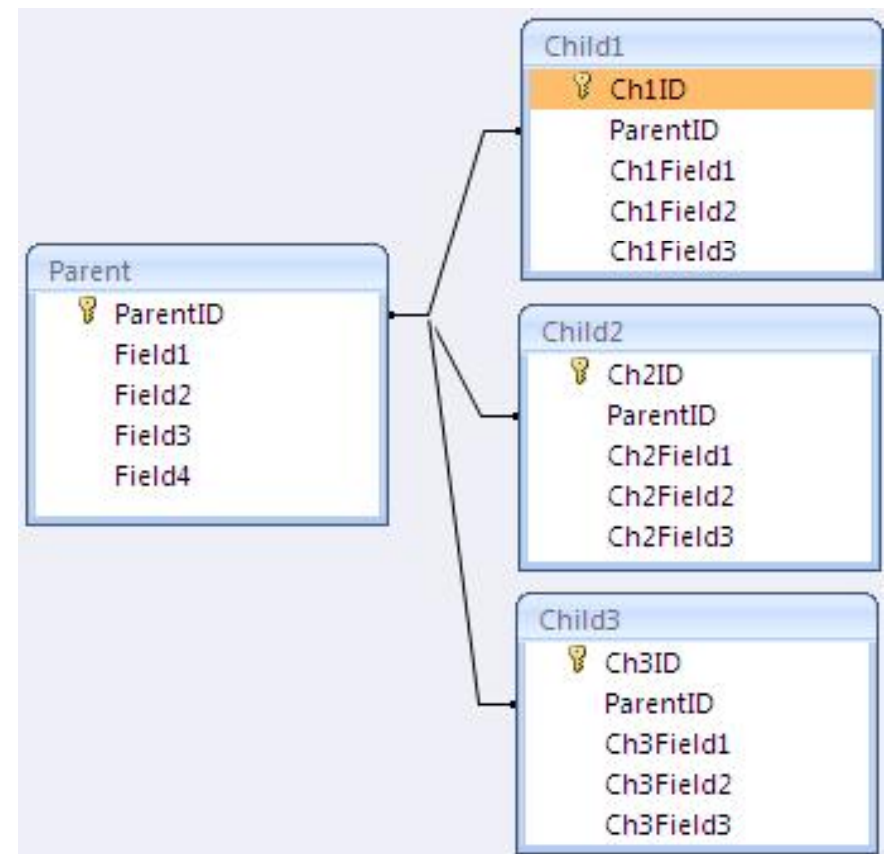
- **The Casualty Actuarial Society is committed to adhering strictly to the letter and spirit of the antitrust laws. Seminars conducted under the auspices of the CAS are designed solely to provide a forum for the expression of various points of view on topics described in the programs or agendas for such meetings.**
- **Under no circumstances shall CAS seminars be used as a means for competing companies or firms to reach any understanding – expressed or implied – that restricts competition or in any way impairs the ability of members to exercise independent business judgment regarding matters affecting competition.**
- **It is the responsibility of all seminar participants to be aware of antitrust regulations, to prevent any written or verbal discussions that appear to violate these laws, and to adhere in every respect to the CAS antitrust compliance policy.**

What is an Orphan?

- Definition – A record in a child table without an associated record in a parent table.
- Parent and Child Tables

ParentID	Field1	Field2	Field3	Field4
1	A	X	1	5
3	B	Y	3	6
4	C	Z	5	7
5	D	T	7	8

Ch1ID	ParentID	Ch1Field1	Ch1Field2	Ch1Field3
1	1	R	1	N
2	1	S	2	N
3	2	R	1	Y
4	2	S	4	N
5	3	R	4	Y



Orphans in Actuarial Data

- What orphans are there in actuarial data?
 - A claim with no associated policy
 - Premium with no associated policy
 - A code with no value in the code lookup table
 - A customer not in the master customer table
 - An agent not in the master agent table
 - A claims vendor not in the master vendor table
 - and more

Orphans in Actuarial Data

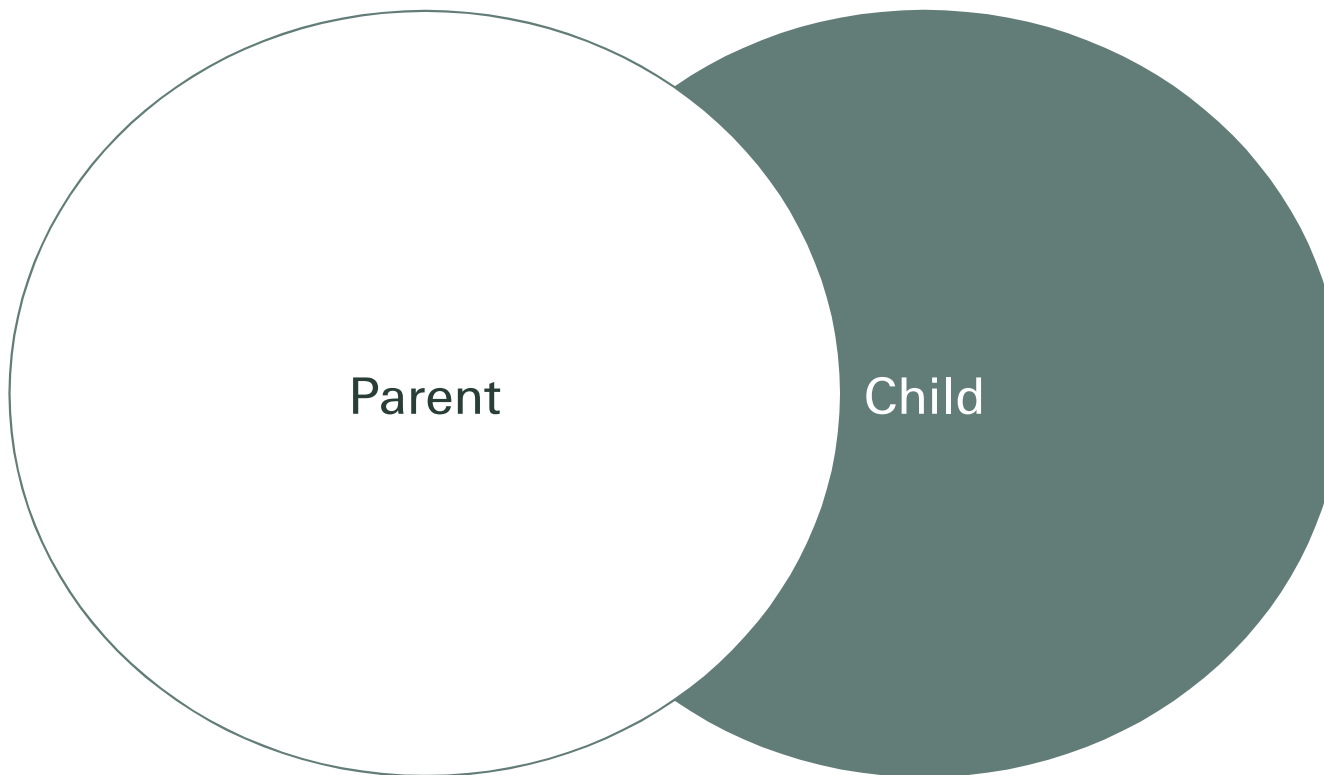
- Why is this now becoming an issue?
 - Prevalence of Predictive Modeling and Data Mining
 - Needs to be resolved early in the data integration process
- Data Integration for Actuarial Work
 - Traditional Pricing and Reserving – Premium and Claims integrated at the coverage level
 - Data Mining and Predictive Modeling – Premium and Claims integrated at the policy level

What causes orphans?

- Policy not booked, but premium and/or claims being paid.
- Endorsements
- Changing coverages
- Quotes with producers not in Agent Management System
- Manual data entry
- Differing filter definitions

How do we test for Orphans?

- SQL – Right Outer Join (Child table on the right) with a where clause (test that record is not in Parent table)



How do we fix orphans?

■ Fix Process

- Systems
 - Referential Integrity
 - Underwriting, Claims and Accounting processes
- Data Entry
 - Edits
 - Lookup Tables
 - Automate
 - Data Quality Rules

How do we fix orphans?

■ Cleanse Data

- Investigate orphan records to find where they should have belonged.
 - Match policy numbers, effective dates, policy names, claimant names or any other fields that are available.
- If you can find a match, preferred method of cleaning is to clean in source system. Otherwise, clean within dataset.
- If you are unable to find matches, sometimes it is best to remove from your dataset for analysis.
- If orphan occurs because of different filtering definitions for policy vs. claims tables, then you could filter policy table first and then merge with claims table.

Swiss Re



Questions ?



Legal notice

©2012 Swiss Re. All rights reserved. You are not permitted to create any modifications or derivatives of this presentation or to use it for commercial or other public purposes without the prior written permission of Swiss Re.

Although all the information used was taken from reliable sources, Swiss Re does not accept any responsibility for the accuracy or comprehensiveness of the details given. All liability for the accuracy and completeness thereof or for any damage resulting from the use of the information contained in this presentation is expressly excluded. Under no circumstances shall Swiss Re or its Group companies be liable for any financial and/or consequential loss relating to this presentation.