

Large Loss Distribution and Regression Analyses



Andrew Kwon, FCAS

Luyang Fu, Ph.D., FCAS

The author's affiliation with The Cincinnati Insurance Company is provided for identification purposes only and is not intended to convey or imply The Cincinnati Insurance Company's concurrence with or support for the positions, opinions or viewpoints expressed.

Agenda



- ❧ **Section 1:** a least-squares based substitute for maximum likelihood, and extensions therein
- ❧ **Section 2:** incorporation of covariate terms and real-world case studies

Large losses matter



⌘ **Ratemaking**

- ⌘ A required consideration for rate adequacy concerns

⌘ **Reserving**

- ⌘ May not share properties with remainder of runoff

⌘ **Reinsurance**

- ⌘ General foundation of excess of loss treaties

⌘ **Risk management**

- ⌘ Disproportionately volatile compared to remainder of book; can impact capital decisions and risk mitigation strategies

Approaches



☞ Risk loading

- ☞ “Skip” problem by inserting a calculated load into applications where large loss analysis would be relevant

☞ Extreme value theory

- ☞ Fisher-Tippett-Gnedenko and Pickands-Balkema-de Haan

☞ General distribution fitting

- ☞ Methods (moments, percentiles, least squares, maximum likelihood)
- ☞ Distribution selection

Insurance complications



- ❧ **Losses** are often not recorded on a ground-up basis (ie. total loss to insured)
- ❧ **Policy terms** and conditions, including loss limits and deductibles, obscure the ground-up distribution of losses
- ❧ “**Undo**”ing these conditions can be valuable in understanding loss patterns not directly observable
- ❧ **Regardless** of data modifications, extremely unlikely to get tight fits

Why do we use MLE?



⌘ Favorable properties

- ⌘ *Convergent*: solutions generally exist
- ⌘ *Consistent*: estimators converge to actual values as size of data set increases
- ⌘ *Unbiased*: only asymptotically (see above)
- ⌘ *Efficient*: leads to minimum variance unbiased estimates
- ⌘ *Normal*: asymptotic, but allows us to make statements about the volatility of estimates
- ⌘ *Explainable*: we maximize the probability of the data set occurring by adjusting the parameters

Why do we use MLE?



From the exam 4 syllabus:

H. Construction and Selection of Parametric Models (25-30%)

1. Estimate the parameters of failure time and loss distributions using:
 - a) Maximum likelihood
 - b) Method of moments
 - c) Percentile matching
 - d) Bayesian procedures
2. Estimate the parameters of failure time and loss distributions with censored and/or truncated data using maximum likelihood.

Why try least squares?



- ❧ **Different distance functions, different estimates**
 - ❧ Not a given that likelihood or squared error is a superior measure of fit for any given purpose
 - ❧ Least squares implicitly weights larger observations more strongly by virtue of its distance function – good?
- ❧ **It's not just plain old linear regression**
 - ❧ Non-linear least squares fits are generally recognized and are available in statistical packages
 - ❧ Similar in execution to linear regression
 - ❧ Not without its own shortcomings, though

Setup and example



Refer to spreadsheet #1.

*Curve fitting demonstration on idealized data
Selected fits, exhibits, and model selection thoughts
on modified property data*

Censoring adjustment



- ❧ **Value changes from point to interval**

- ❧ **Maximum likelihood treatment**
 - ❧ Numerator changes from PDF to some cumulative function
 - ❧ More or less accepted as given methodology

- ❧ **Least squares treatment?**
 - ❧ Initial focus of research
 - ❧ Several proposals found in literature, all reflecting a decrease in information indicated by a censored value

The EP' algorithm



- ✧ Credit to Leo Breiman, Yacov Tsur, Amos Zemel
 - ✧ What if we “fill in” the missing information?
 - ✧ (E) step is a data transformation; only censored values change, value = last value + expected conditional error
 - ✧ (P) step is a numerical optimization; determine new parameters for distribution based on modified data
 - ✧ Repeat (E) step with change in expected errors, then (P), then repeat until least-squares estimator satisfactorily converges
- ✧ Simplifying assumption
 - ✧ What can we do to sidestep defining the error distribution?

Setup and example



Refer to spreadsheet #2.

Demonstration of maximum likelihood and least squares adjustments for censored observations on idealized data

Selected fits, exhibits, and model selection thoughts on modified liability data

Truncation adjustment



- ❧ Unable to access portion of the distribution
- ❧ Maximum likelihood treatment
 - ❧ Denominator changes from 1 to survival function
 - ❧ More or less accepted as given methodology
- ❧ Least squares treatment
 - ❧ Direct corollary - recognize we are not fitting on the entire $[0,1]$ domain of possibilities
 - ❧ What if we allow the lower bound of the domain to vary with the change in fitted parameters?

Transformation

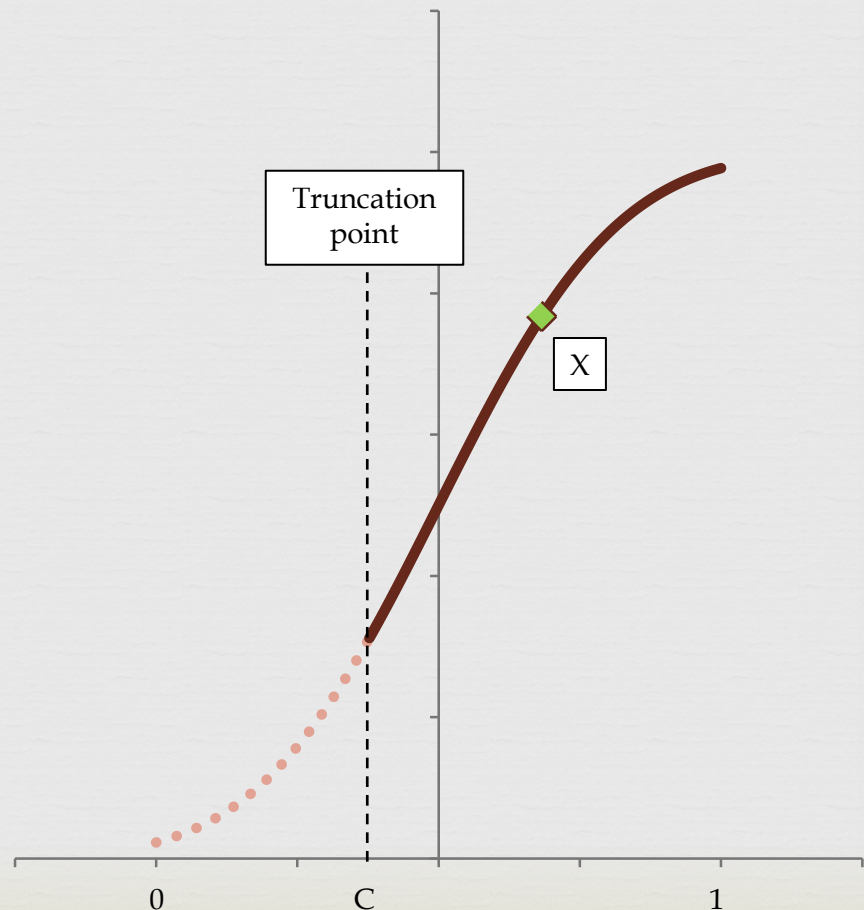


The observed data point x falls in the probability interval $[c,1]$, but in order to pull the correct inverse CDF, we need its probability over $[0,1]$ instead.

If you envision a mixed distribution with weight $F(c)$ on zero and $S(c)$ on observed data, this provides a direct solution to the problem.

Because a CDF must be monotonically increasing, the $F(c)$ weight generally comes first, so:

$$F(p) = F(c) + S(c)F(p | p > c)$$



Setup and example



Refer to spreadsheet #3.

Demonstration of truncation adjustments for maximum likelihood and least squares on idealized data

Practitioner's notes



- ❧ Still possible for optimization to fail on least squares
- ❧ Truncation workarounds in case of divergence
 - ❧ Solution one: judgmentally or analytically select a truncation point
 - ❧ Solution two: left-shift data instead and correct afterwards
- ❧ Methods have variable degrees of success coping with different modifiers and different data
- ❧ Modifiers to loss data can sometimes be more significant to fit quality than data itself

Business Mixes and Large Losses



- ❧ We just checked the distribution of loss (Y), not the predictors behind loss (X).
- ❧ Business mixes impact Property large loss propensities
 - ❧ Coverage A
 - ❧ Territory / protection class
 - ❧ Industry group
 - ❧ Sprinkler system
 - ❧ Other

Business Mixes and Large Losses



- ❧ Business mixes impact GL large loss propensities
 - ❧ Class or NAIC codes;
 - ❧ Sublines
 - ❧ Limit groups
 - ❧ Table 1,2,3 for PremOP;
 - ❧ Table A, B, C for Product and Complete Op
 - ❧ Contractors and subcontractors
 - ❧ Umbrella coverage
 - ❧ Other

Injury Mixes and Large Losses



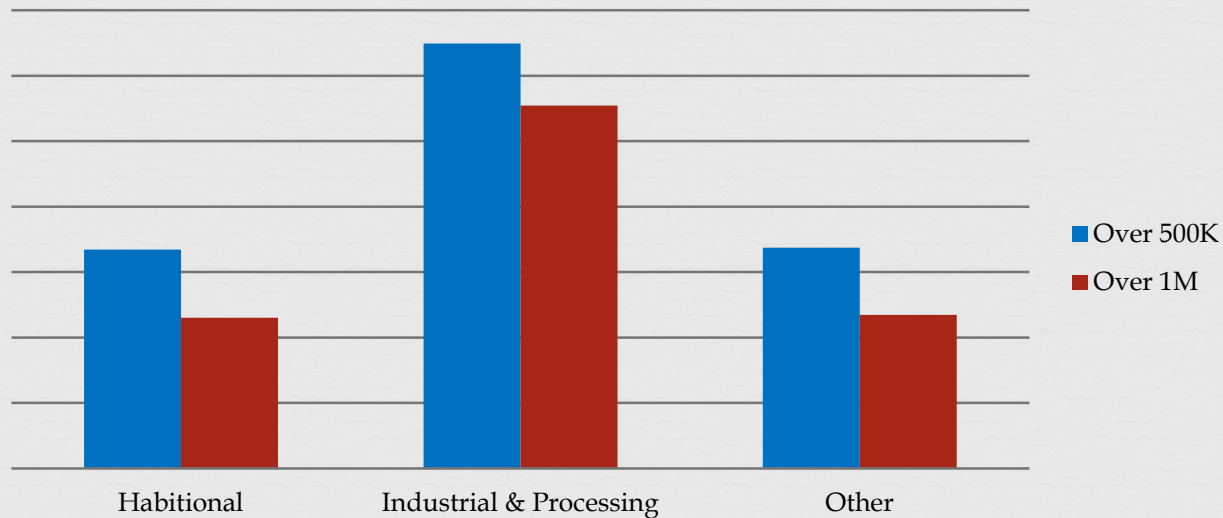
- œ Injury mixes impact WC large loss propensities
 - œ AIA codes
 - œ ICD9
 - œ CPT
 - œ Class and NAICS
 - œ Drugs
 - œ Hazard Group
 - œ Etc.

Commercial Property Large Loss



Property large loss by industry group

Property Large Loss Percentage by Industry

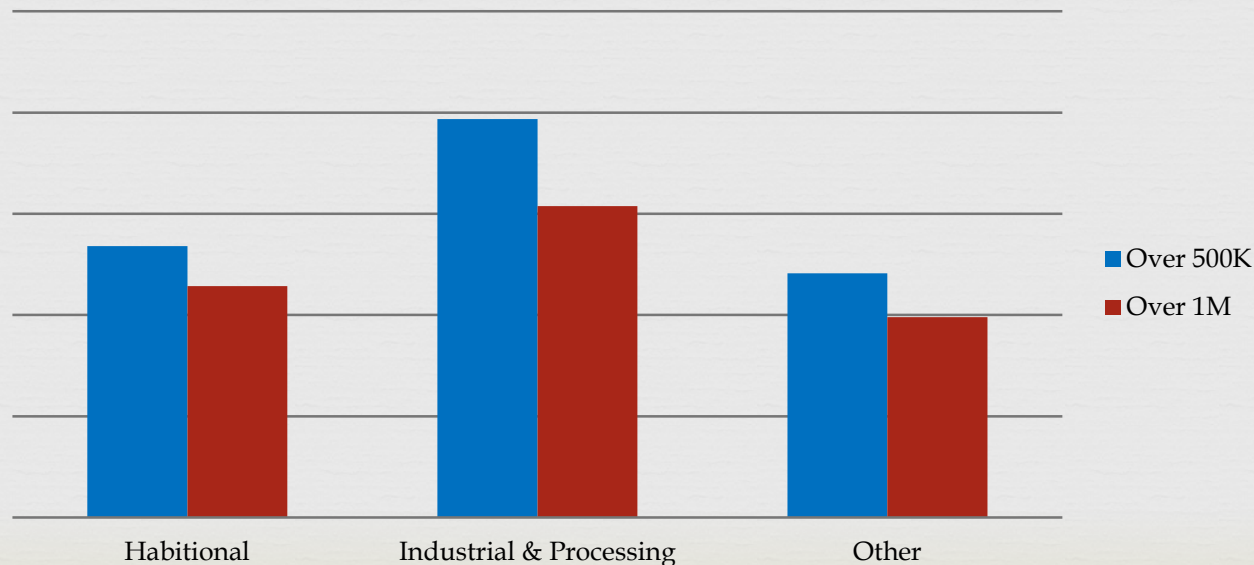


Commercial Property Large Loss



- Loss distribution is defined by both mean and volatility
- Volatility is very important for reinsurance pricing and ERM
- Volatility is often heterogeneous

Property Large Loss CV by Industry Group

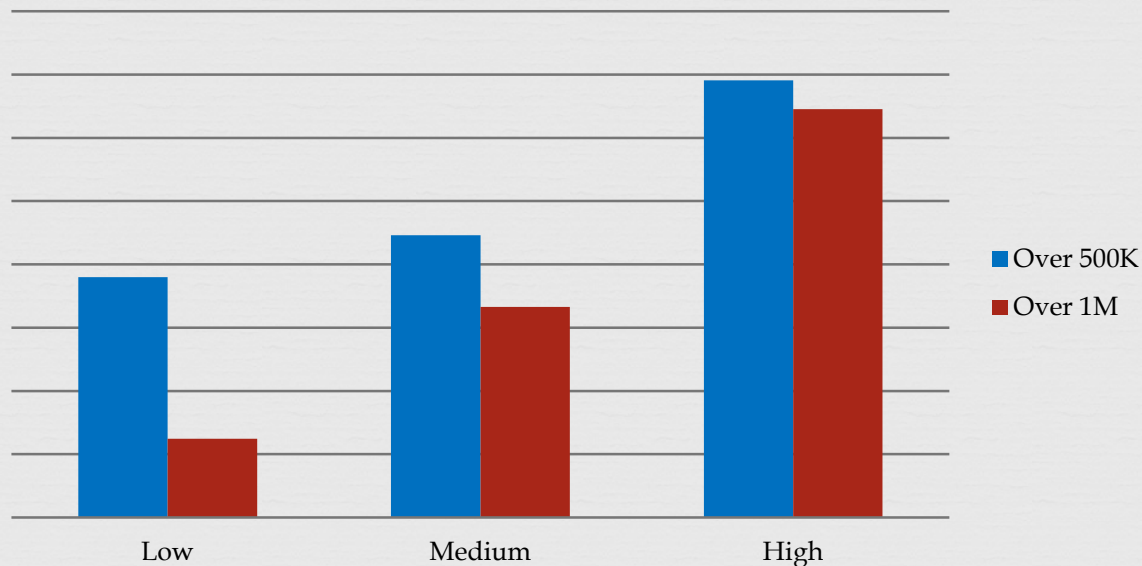


Commercial Property Large Loss



Property large loss within IP by manufacture type

Property Large Loss Percentage within IP Risks

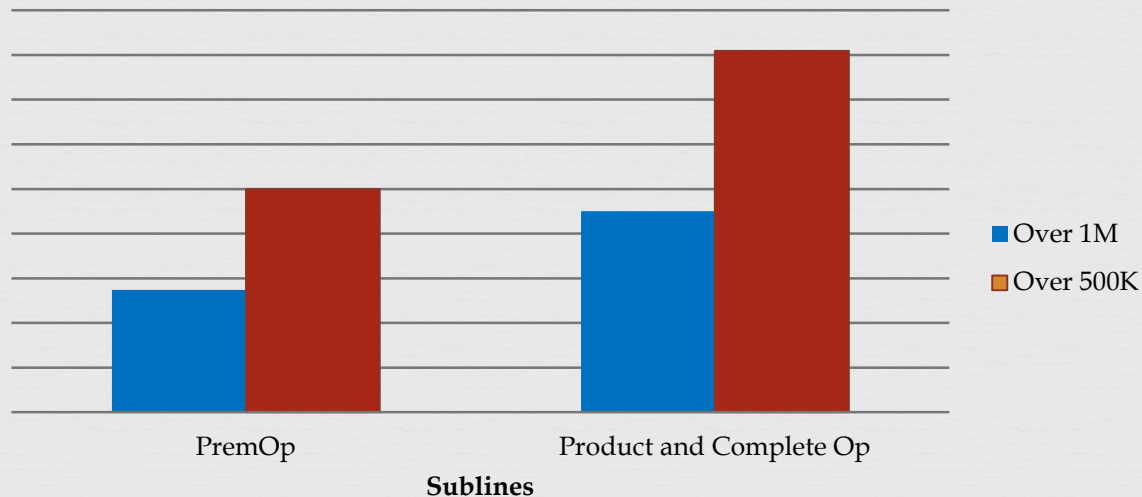


General Liability Large Loss



GL large loss by subline

GL Large Loss Percentage by Subline

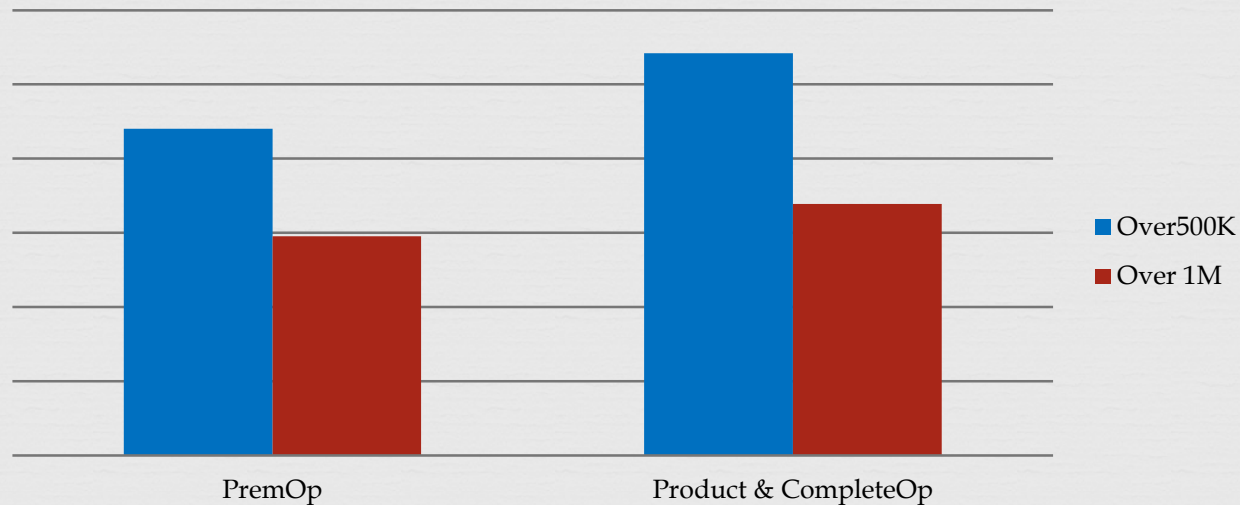


General Liability Large Loss



GL large loss coefficient of variation by subline

GL Large Loss CV by Subline

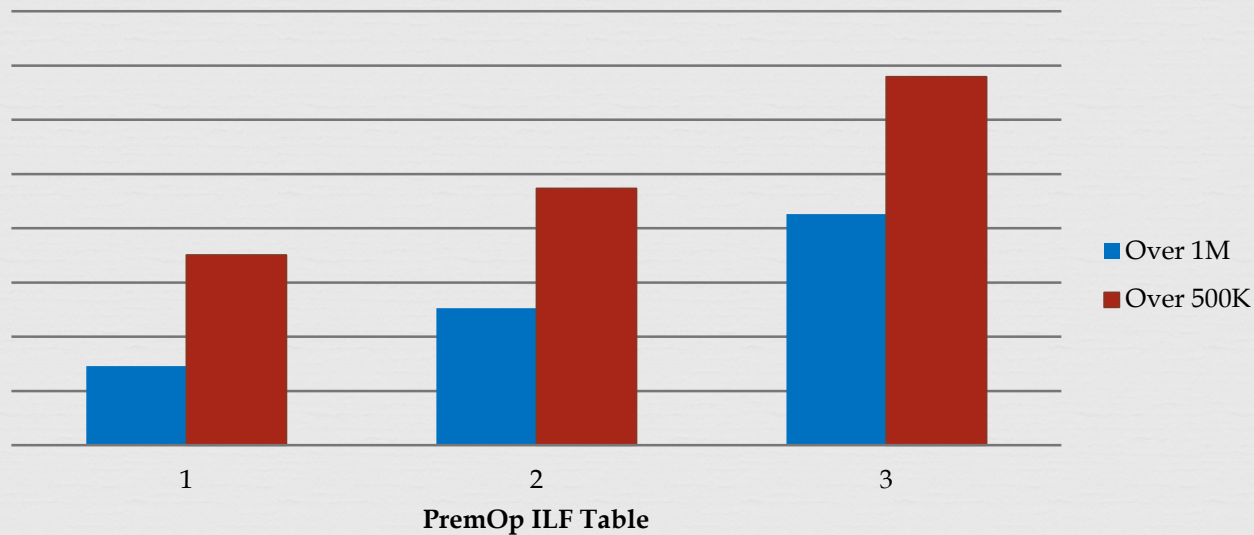


General Liability Large Loss



GL large loss within PremOp by ILF table

GL Large Loss Percentage by ILF Table

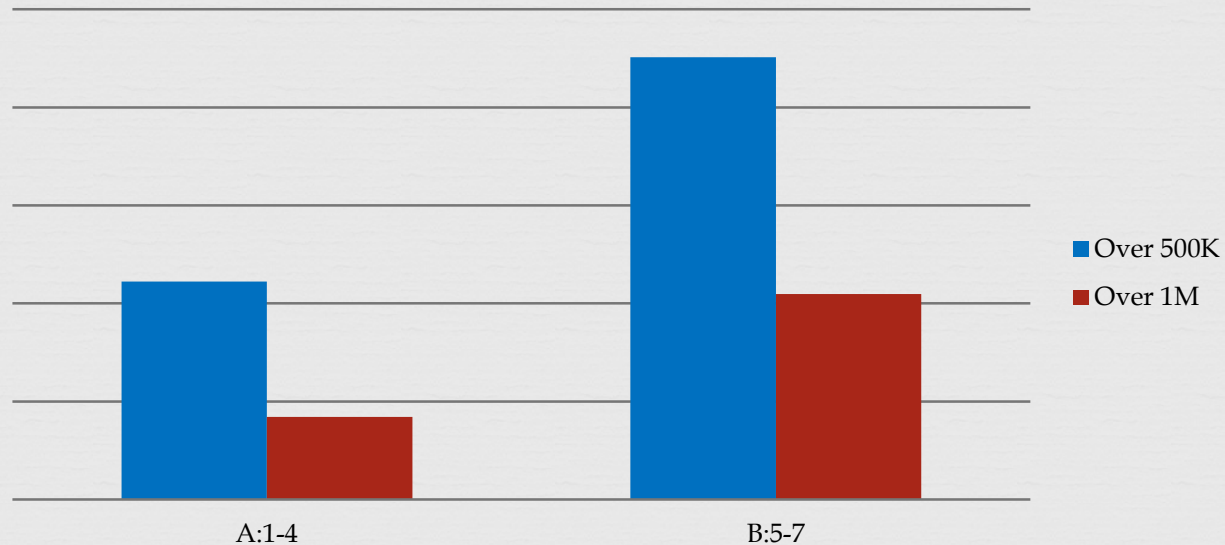


WC Large Loss: Claims Perspective



WC large loss by hazard group

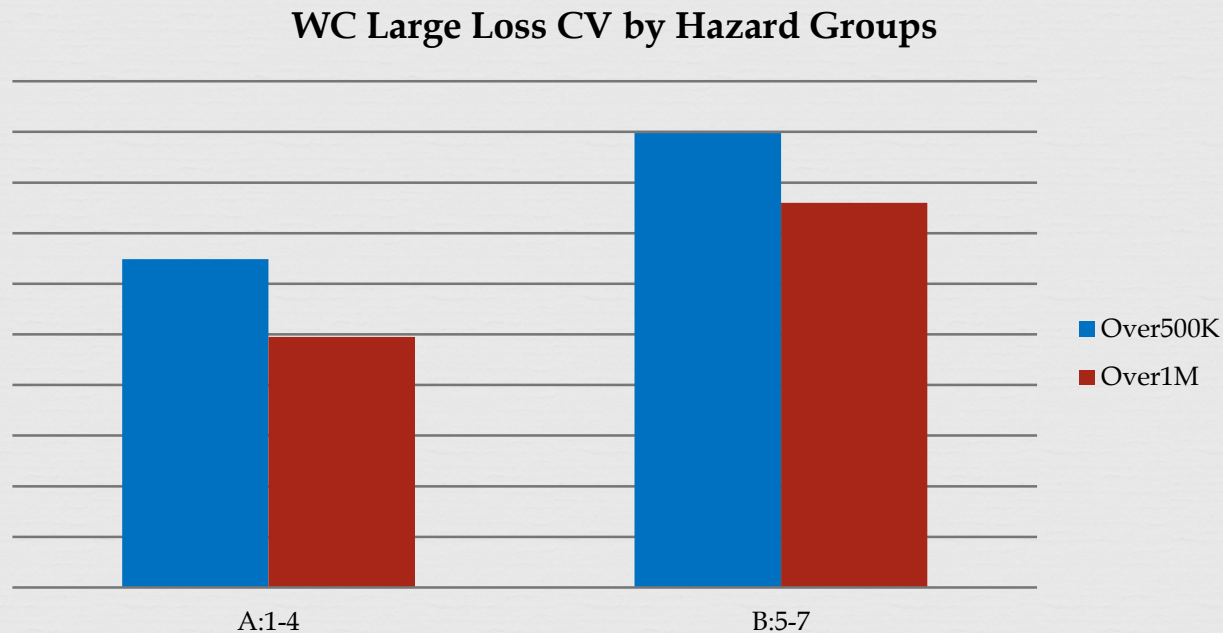
WC Large Loss Percentage by Hazard Group



WC Large Loss: Claims Perspective



WC large loss coefficient of variation by hazard group

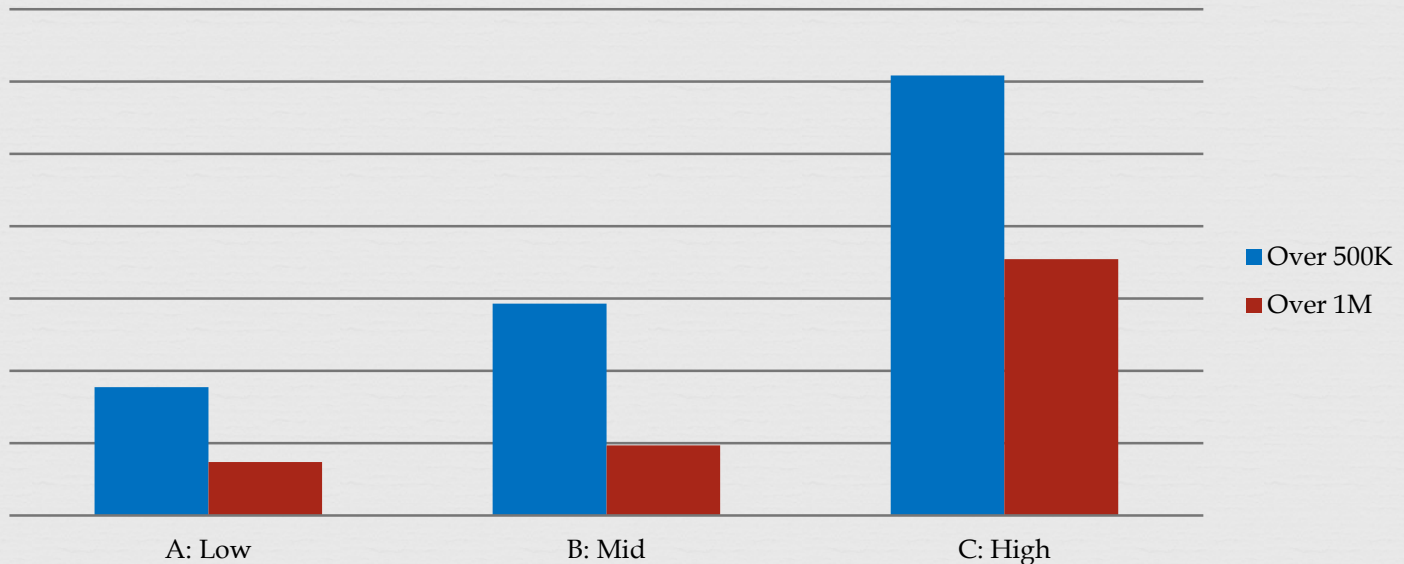


WC Large Loss: Claims Perspective



WC large loss within hazard group 3 by AIA code

WC Large Loss Percentage within Hazard Group 1-4 by AIA Code

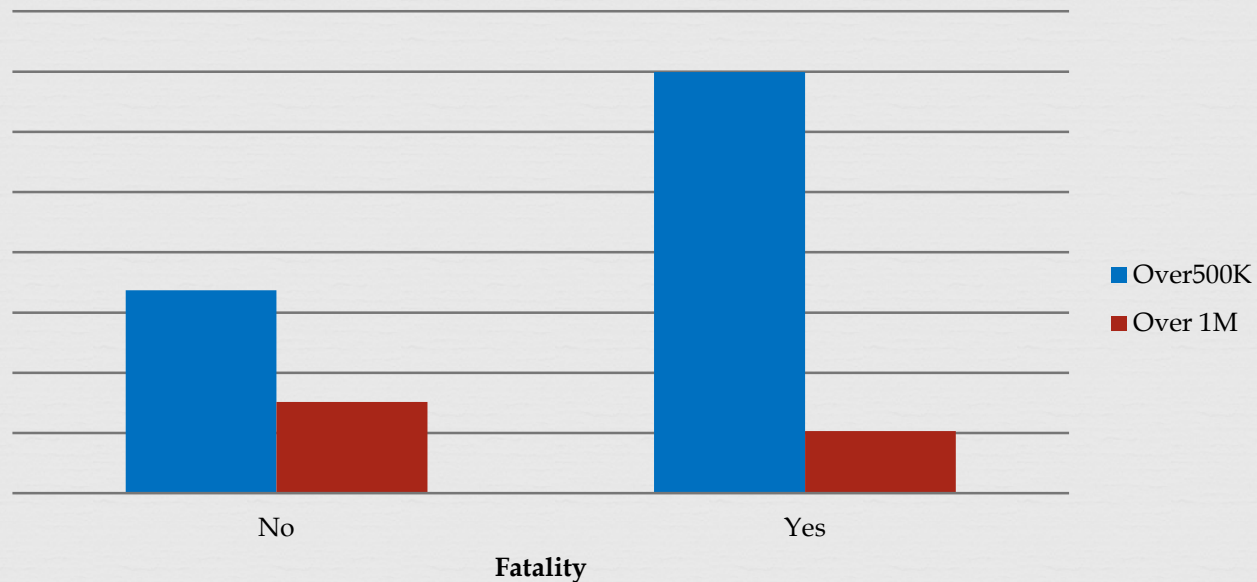


WC Large Loss: Claims Perspective



WC large loss by Fatality

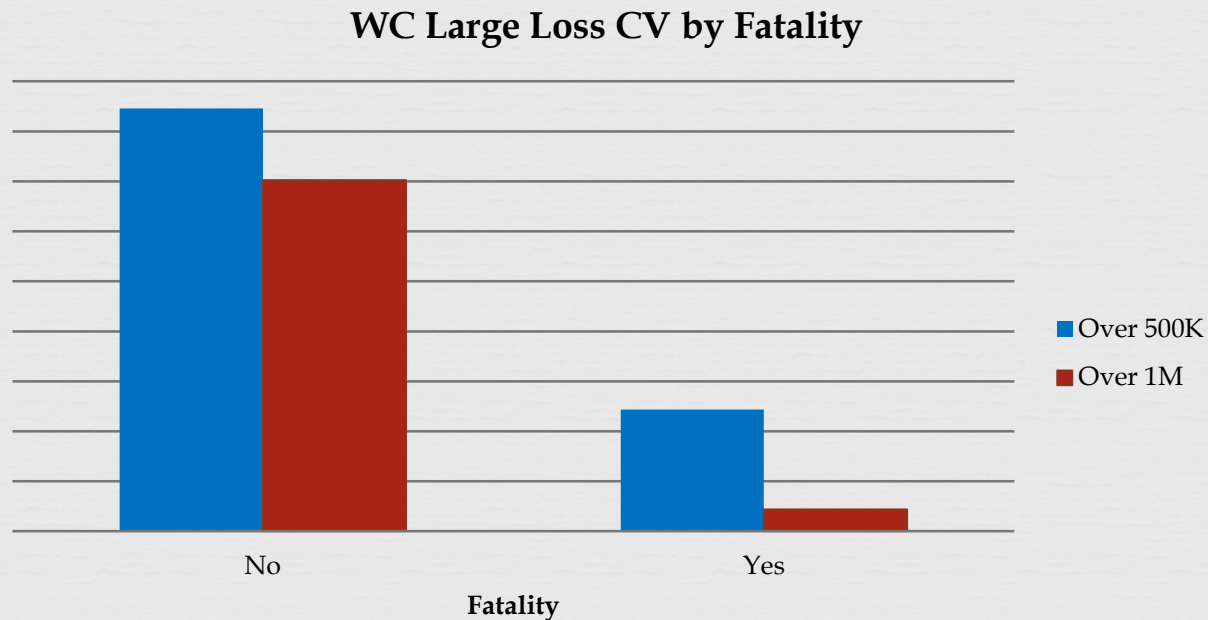
WC Large Loss Percentage by Fatality



WC Large Loss: Claims Perspective



WC large loss coefficient of variation by fatality



Regression Models



- ❧ Model individual policies instead of whole book
 - ❧ Contemplate underlying risk characters
 - ❧ Granular trending: by peril, by subline, etc.
 - ❧ More work than conventional distribution fitting
- ❧ Large loss frequency: logistics or GLM
- ❧ Severity: GLM, log-linear, and other more complicated models

Regression Models



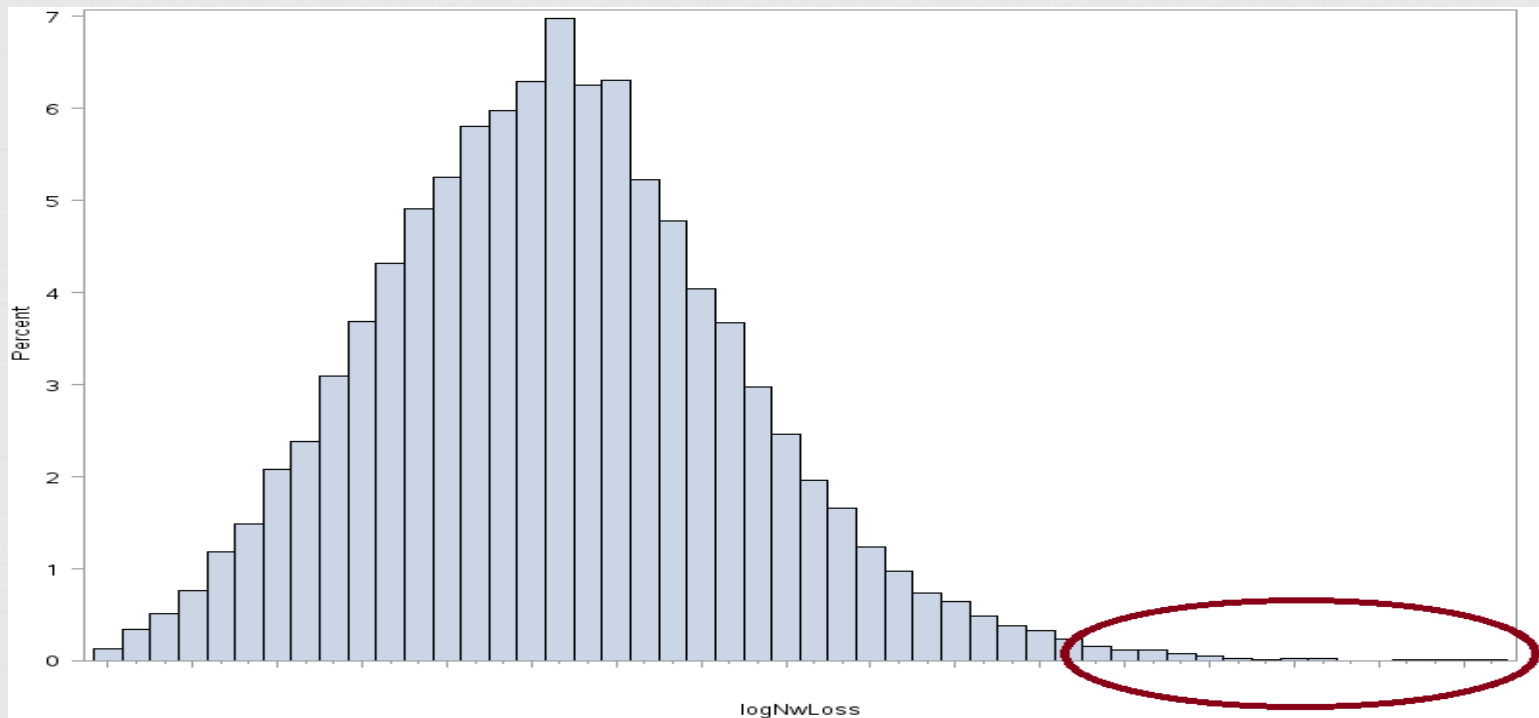
- ❧ Severity Model: Double GLM
- ❧ Certain risks can be much more volatile, which implies that GLM dispersion factor may not be constant,
 - ❧ Traditional GLM:
 - ❧ $mean(loss) = \hat{y} = \exp(X\beta_1)$
 - ❧ $variance(loss) = constant * \hat{y}^\alpha$
 - ❧ X is the vector of predictive variables including the constant term
 - ❧ \hat{y}^α is the variance function.
 - ❧ Double GLM: heterogeneous variance
 - ❧ $mean(loss) = \hat{y} = \exp(X\beta_1)$
 - ❧ $variance(loss) = \exp(X\beta_2) * \hat{y}^\alpha$
 - ❧ $X\beta_1$ is the first GLM to fit mean; $X\beta_2$ is the second GLM to fit for heterogeneous dispersion factor

Regression Models



Severity Model: Finite Mixture model

Single distribution usually does not model heavy tail densities well



Commercial property loss has a longer tail than lognormal

Regression Models



Severity Model: Finite Mixture model

$$f(X, \beta_1, \beta_2) = \pi(X) * f_1(X, \beta_1) + (1 - \pi(X)) * f_2(X, \beta_2)$$

f_1 is normal loss distribution; f_2 is severe loss distribution; X is the vector of predictive variables; $\pi(x)$ is the probability of being in a severe distribution

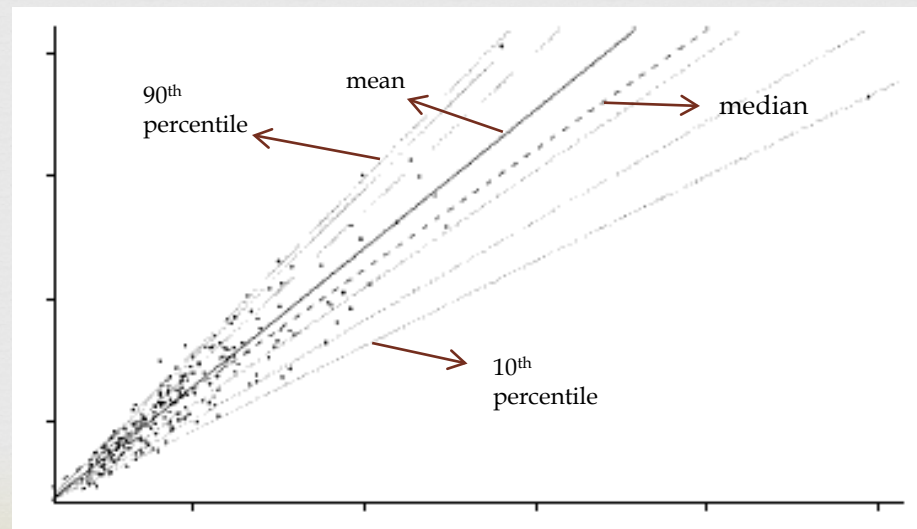
$\pi(x)$ varies by business mix. The probability of plastic manufacturers to be in severe distribution is much larger than average book

Regression Models



Severity Model: Quantile Regression

- ✧ Tail performance can be very different from the mean
- ✧ Predict percentiles of potential loss other than just mean or variance
- ✧ Robust and less sensitive to extreme values



Regression Models



- ⌘ How to deal with data censorship
 - ⌘ Tobit
 - ⌘ Double GLM and FMM with censoring data
 - ⌘ Solve the maximum likelihood function directly
 - ⌘ Numerical solutions through R or SAS (Proc nlmixed)
 - ⌘ EP (Expectation and Projection) algorithm
 1. E: Run regression using censored data
 2. P: fill those censored losses with predicted value from the “E” step
 3. E: refit the model using the fitted values on censored records
 4. Redo P step and keep iterations

Case Studies



Case studies will be presented in the seminar